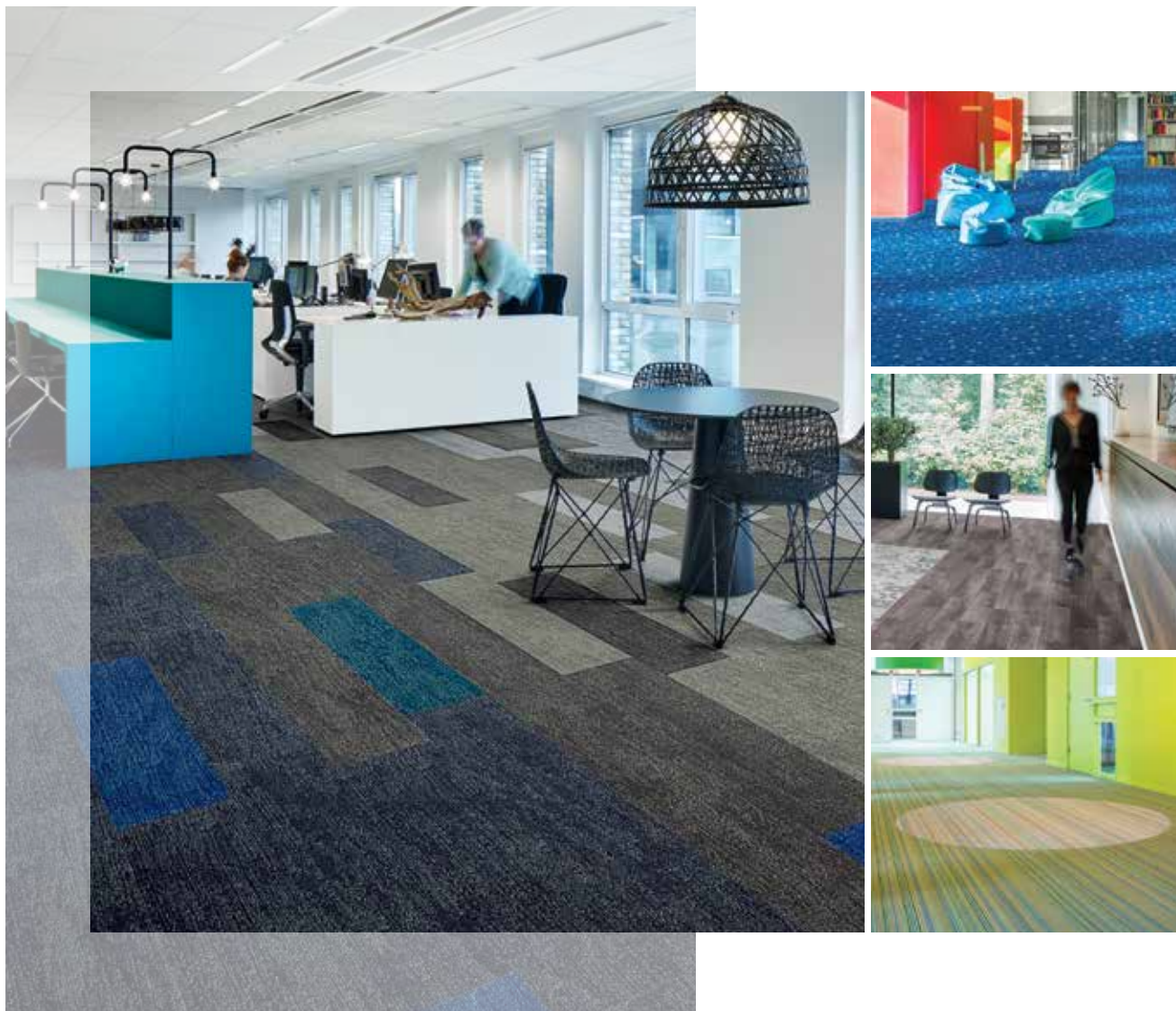




BY APPOINTMENT TO H.M. THE QUEEN
MANUFACTURERS OF FLOORCOVERING
FORBO FLOORING UK LTD, KIRKCALDY

CI/SfB
(43) Tn

May 2018



Flocked Floor Coverings

flotex[®]

creating better environments

forbo

FLOORING SYSTEMS

FLOCKED FLOORING IN SHEET, TILE AND PLANK

Flotex is a floor covering that looks and feels like a carpet without any of the drawbacks of a textile floor covering. It has a smooth, velour like surface that is comfortable to walk on and warm underfoot, with excellent slip resistant and acoustic properties.

flotex® colour

Three versatile and fresh designs make up the Flotex Colour collection: Metro, Calgary and Penang. Together they offer a range of 110 unique colourways, all available in sheet and tile and all complemented by 26 Artline borders. Flotex Colour ranges have no pattern repeats due to their Green Design.



flotex® linear

This collection presents a comprehensive choice of five linear designs in various colourways that complement commercial and educational environments, but also deliver playful effects for leisure, hospitality or retail spaces.



Flotex, more than any of our products, fulfils our ambition to contribute to creating better indoor environments by committing to the health and well-being of all individuals living and working in indoor spaces. Flotex achieves this through excellent hygiene and sound absorbing qualities, phthalate-free products, the certification by Allergy UK for the positive effects it has on allergy sufferers, and a wide range of stimulating designs and sympathetic colours which can create inspiring interiors.



**COMMITTED
TO THE HEALTH
OF ONE**
WWW.FORBO-FLOORING.CO.UK/CHO

FLOTEX COLLECTION AT A GLANCE

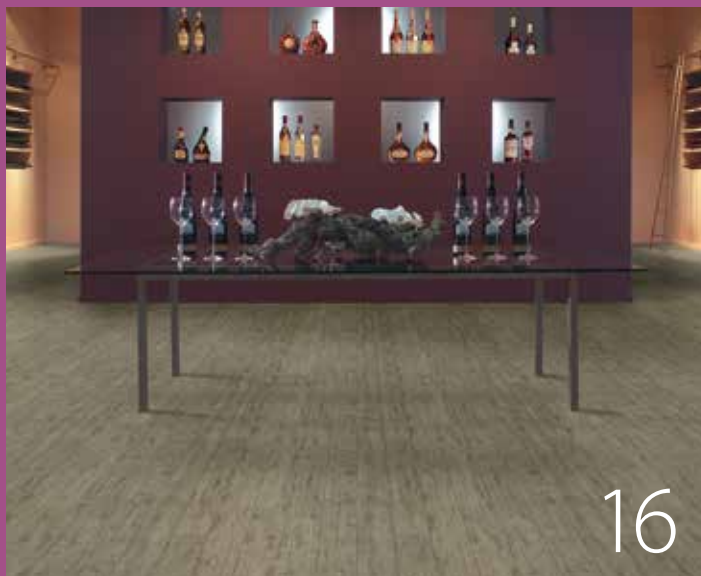
flotex® planks

The performance attributes of Flotex along with the design versatility of the Plank collection, make these modular floor coverings ideal for use in workspaces as well as high traffic areas such as call centres, hotels and transport hubs.



flotex® naturals

This special range of digitally printed Flotex delivers the appearance of a real wood floor but with improved acoustics and reduced maintenance costs.



flotex® vision

We've brought together an inspiring choice of over 500 digitally printed designs to suit every taste or requirement, right down to a 'colour on demand' option.





Flotex Inspired by Van Gogh 000944 | terrace at night

the Art of FLOCKING

Like a timeless work of art, Flotex flocked floor coverings are an excellent investment with a unique blend of qualities that will complement any project. Flotex will also retain its superior aesthetics for years to come. Choose from an array of stunning designs in our Vision or designer collections, or create your own masterpiece using our bespoke service.

What will you do with the freedom? Creatively Flotex will enhance any interior whilst our precision-driven manufacturing process ensures high quality and performance.

Flotex. The Art of Flocking.



Flotex has a positive impact on the lives of allergy sufferers as daily vacuuming removes twice as many allergens compared to conventional carpets. That is why Flotex carries Allergy UK's Seal of Approval™.

Always flawless, so do your worst! Looking immaculate whatever comes its way, and designed to handle high traffic, Flotex flocked flooring really is a star performer.

With a 10 year guarantee, it's well suited to areas where durability and cleanability are essential. There's no need to decide between functionality or style, why not have both with Flotex? You'll be thanking your lucky stars you chose it!

Breathe easy in the knowledge you chose Flotex flocked flooring. With the prestigious Allergy UK Seal of Approval™, Flotex contributes to better indoor environments in which to live, work, learn and play.

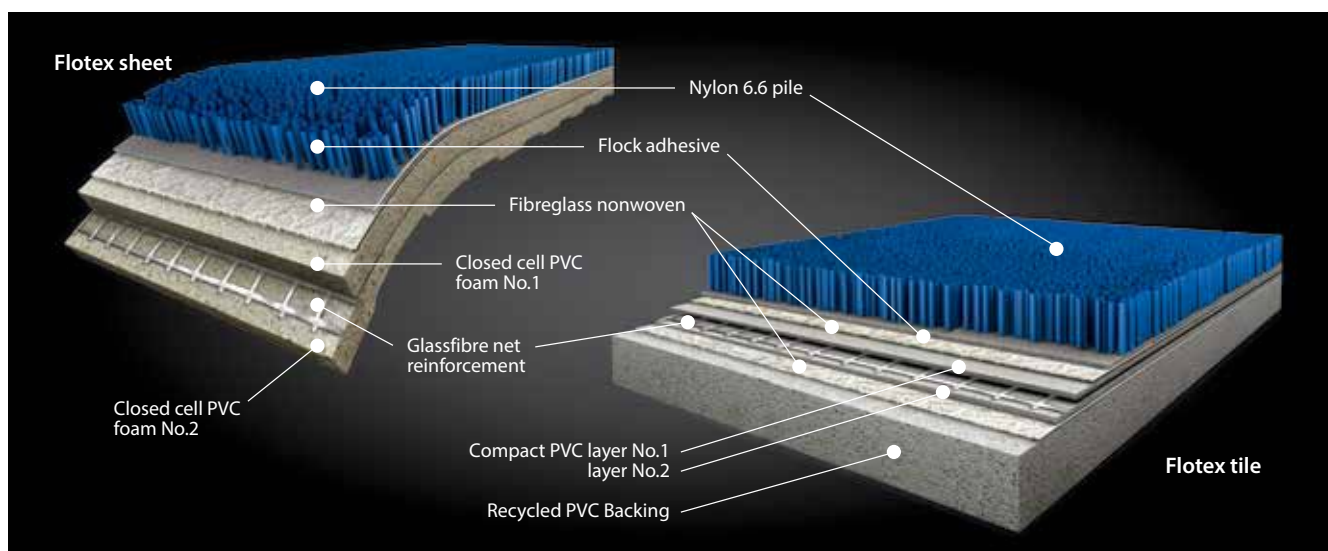
Slip resistant and offering up to 20dB impact sound reduction, Flotex really is a reassuringly safe and sound flooring solution. All Flotex ranges are phthalate free and our sheet ranges, Colour and Linear have undetectable levels of emissions.



How does Flotex compare to other textile floor coverings?

	Flotex	Loop pile carpet tile	Cut pile carpet tile	Needlefelt sheet
Durability	● ● ● ●	● ● ●	●	● ●
Cleanability	● ● ● ●	●	●	●
Ease of installation (tile)	● ● ● ●	● ● ● ●	● ● ● ●	●
Hygienic and 'Allergy UK' approved	● ● ● ●	-	-	-
Impermeability (sheet)	● ● ● ●	-	-	-
Repairs to damage	● ● ●	● ● ● ●	● ●	-
Impact sound reduction	● ● ●	● ● ● ●	● ● ● ●	● ● ●
Underfoot comfort	● ●	● ● ●	● ● ● ●	●

FLOTEX THE HIGH TECH TEXTILE



- Straight Nylon 6.6 fibres (flock) capture fine dust and allergens which are easily released when vacuumed
- 70 million fibres per m² deliver an extremely durable and slip resistant surface
- Cushioned backing provides comfort and acoustic performance
- Impervious backing makes Flotex suitable for mechanical wet cleaning
- Double strength glass fibre reinforcement results in excellent dimensional stability
- Flotex sheet contains up to 20% recycled content
- Flotex tile and plank contain up to 52% recycled content

THANK FLOCK IT'S FLOTEX

Flotex offers a completely different dimension in flooring as it combines all the hard wearing and durable characteristics of a resilient floor with the warmth and comfort of a textile floor covering. EN 1307, the European Standard which measures the performance of textile flooring, has recently annexed extra clauses to this standard to recognise that flocked floor coverings differ from textile flooring.

EN1307 annexe F – abrasion resistance

In this new standard, the pile surface of the flocked flooring is rubbed back and forth 1,000 times with a 2cm wide pointed metal blade loaded with a 2kg weight. The aim of the test is to establish the durability of the flocked flooring. At least 50% of the pile must be retained at the end of the test for the product to meet the standard's requirement. We test Flotex for 1,500 cycles and we achieve a much higher result than 50% of pile remaining.

Cleanability

Whether it's water soluble stains such as coffee, ketchup, cola, wine etc or a greasy stain like butter, engine oil or permanent marker, it can be removed from Flotex. Just visit www.forbo-flooring.co.uk/flotex and watch our 'Clean and Care' video to see how the floor below was quickly and simply cleaned to look just like a new floor.

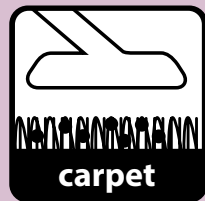




flotex®

carpet

Vacuuming removes DOUBLE the ALLERGENS compared to conventional carpet



Vacuumping removes DOUBLE the ALLERGENS compared to conventional carpet



**Wet & Dry
slip resistance
classification
for both
flat areas
and ramps**

Exclusive
design
collaboration
with
TIBOR

Warm underfoot



flotex®
is approved by



Create your
own bespoke
design with
flotex®



Slip resistance

flotex® colour
has no pattern repeats

leatspatter X spattern re
n repeats pa repeats patt
attern repea ttern repeat
ats pattern s pattern re



WHY CHOOSE FLOTEX?

<p>Many flotex[®] ranges are available in both tile and sheet format</p> 	<p>up to 20dB</p>  <p>Impact sound reduction</p>	 <p>ideal for use in the leisure & hospitality sector</p>
<p>70 million</p>  <p>nylon fibres</p> <p>per square metre</p>		<p>flotex[®] installation off-cuts are recycled through</p>  <p>Forbo back to the floor recycling Forbo's flooring</p>
<p>PHthalate FREE</p>  <p>flotex[®] is phthalate free</p>	<p>flotex[®] naturals has the appearance and texture of real wood</p>	
<p>flotex[®] vision</p> <p>500</p> <p>digitally printed designs</p>	 <p>suitable for use in the care sector</p>	 <p>flotex[®] tiles are available in various sizes and offer all the flexibility of modular products</p>
 <p><20%</p> <p>recycled content in flotex[®] sheet</p>	<p>Recolour certain designs with</p>  <p>Flotex vision</p>	 <p>flotex[®] sottsass exclusive design collaboration with SOTTASS ASSOCIATI</p>



Flotex colour metro **t546007** | ash + metro neon **t587006** | shock

Flotex, more than any of our products, fulfils our ambition to contribute to creating better indoor environments by committing to the health and well-being of all individuals living and working in indoor spaces. Flotex achieves this through excellent hygiene and sound absorbing qualities, phthalate-free products, the certification by Allergy UK for the positive effects it has on allergy sufferers, and a wide range of stimulating designs and sympathetic colours which can create inspiring interiors.



**COMMITTED
TO THE HEALTH
OF ONE**
WWW.FORBO-FLOORING.CO.UK/CHO

FLOTEX COLOUR COLLECTION AT A GLANCE

flotex® colour metro | metro neon

Flotex Metro is a versatile semi-plain design which covers a wide and modern colour bank including 8 statement neon colours. The understated pattern conveys texture without definite form, creating an authentic feel that is unique to Flotex. This collection lends itself to education, aged care or retail applications but will work in any location where a subtle textile look is desired.



10

flotex® colour penang

Flotex Penang offers a stunning look for any modern environment. It creates a subtle linear effect and comes in a range of rich modern shades.



12

flotex® colour calgary

Flotex Calgary offers a wide colour choice in a soft, natural design that works well in larger areas. The pattern can be easily combined with complementary Flotex or resilient ranges and is the perfect choice for application areas that require a muted ambience.



14

flotex® naturals

A special range of 9 flocked floor coverings that all deliver the appearance of a real wood floor. The range includes timber designs to suit everyone's needs and colour schemes, from beech and blackened oak to antique pine and european white wood.



16

flotex® artline borders

With Artline you are able to make borders, creative features and delineators between colourways or even different designs. Artline is available in 11cm or 22cm widths and matches the base shades of the various Flotex Colour and Linear designs.



37

flotex® colour

metro | metro neon



Flotex Metro is a versatile semi-plain design which covers a wide and modern colour bank including 8 statement neon colours. The understated pattern conveys texture without definite form, creating an authentic feel that is unique to Flotex. This collection lends itself to education, aged care or retail applications but will work in any location where a subtle textile look is desired.

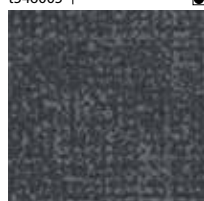
There is no pattern repeat on Metro as this range has been designed with Green Design principles.



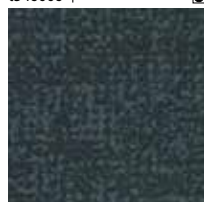
Metro s246019, t546019 | citrus + s246010, t546010 chocolate



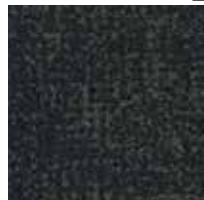
s246005 | nimbus LRV 13



s246006 | grey LRV 8



s246024 | carbon LRV 5



s246007 | ash LRV 4



s246008 | anthracite LRV 3



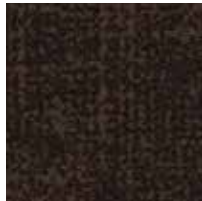
s246011 | pebble LRV 14



s246015 | cocoa LRV 7



s246029 | truffle LRV 9



s246010 | chocolate LRV 3



s246009 | pepper LRV 9



s246014 | concrete LRV 4



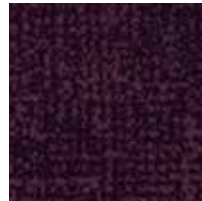
s246035 | pink LRV 7



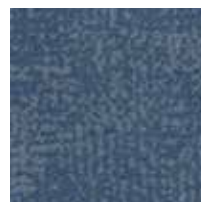
s246034 | lilac LRV 9



s246016 | grape LRV 5



s246027 | burgundy LRV 2



s246004 | gull LRV 11



s246020 | lagoon LRV 10



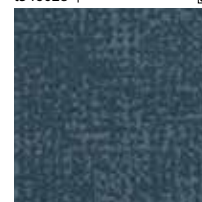
s246001 | indigo LRV 3



s246018 | mineral LRV 15



s246028 | jade LRV 7



s246002 | tempest LRV 7



s246032 | petrol LRV 4

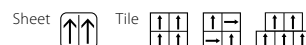


s246023 | horizon LRV 4



Metro Neon s287002, t587002 | zest

Description	Flocked flooring	
Dimensions	Sheet: Roll width 2m	Roll length ≤ 30m
	Tile: 50cm x 50cm (3m² per box)	60 x 60cm & 100 x 100cm available on request
Total thickness	ISO 1765	Sheet: 4.3mm Tile: 5.3mm
Slip resistance	Pendulum test	Wet – low slip risk
Collection size	45	
Application	EN 1307	Class 33
Impact sound reduction	EN ISO 717-2	Sheet: ΔLw = 20 dB Tile: ΔLw = 19 dB
CE	EN 14041	
Reaction to fire	EN 13501-1	B _{fl} -s1
Slip resistance	EN 13893	DS: ≥0.30
Body voltage	EN ISO 10965	< 2 kV



Our recommended adhesive for Flotex Sheet is 540 Eurosafe Special or 640 Eurostar Special. For Flotex tiles our recommended adhesive is 542 Eurofix Tack Plus. Full technical specifications are available at www.forbo-flooring.co.uk/downloads

Please note: Digital representations may vary from the actual product. Please order a sample to see the full effect. Contact 0800 731 2369.



BREEAM ratings

Flotex Colour – Flotex F50 tile with recycled backing (EN1307)

Flotex Colour – Flotex F200 sheet with PVC backing (EN1307)

	Commercial	Education	Health	Domestic	Retail (Durability)	Retail (Fashion)	Meets Ska criteria
Tile	B	A	A	B	B	A+	✓
Sheet	A	A+	A+	A	A	A+	✓



Sheet only



s246019 | citrus | LRV 18



s246037 | apple | LRV 15



s246033 | emerald | LRV 11



s246021 | moss | LRV 7



s246022 | evergreen | LRV 6



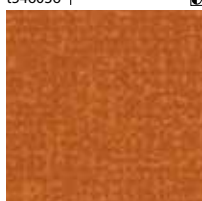
s246012 | sand | LRV 18



s246013 | amber | LRV 22



s246036 | gold | LRV 29

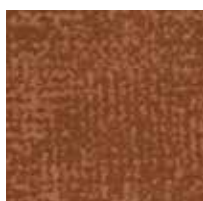


s246025 | tangerine | LRV 18

- Usage classification**
- Superior appearance rating
 - Good appearance rating
 - Moderate appearance rating

For more information see page 37.

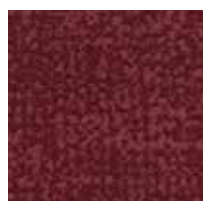
s = Sheet t = Tile



s246003 | melon | LRV 11



s246030 | cinnamon | LRV 4



s246017 | berry | LRV 5



s246031 | cherry | LRV 6



s246026 | red | LRV 9



s287005 | graphic | LRV 18



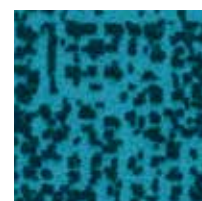
s287003 | electric | LRV 7



s287008 | lava | LRV 7



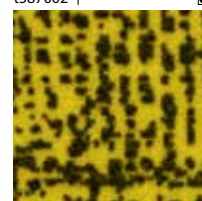
s287001 | flame | LRV 3



s287004 | splash | LRV 10



s287002 | zest | LRV 13



s287007 | acid | LRV 18

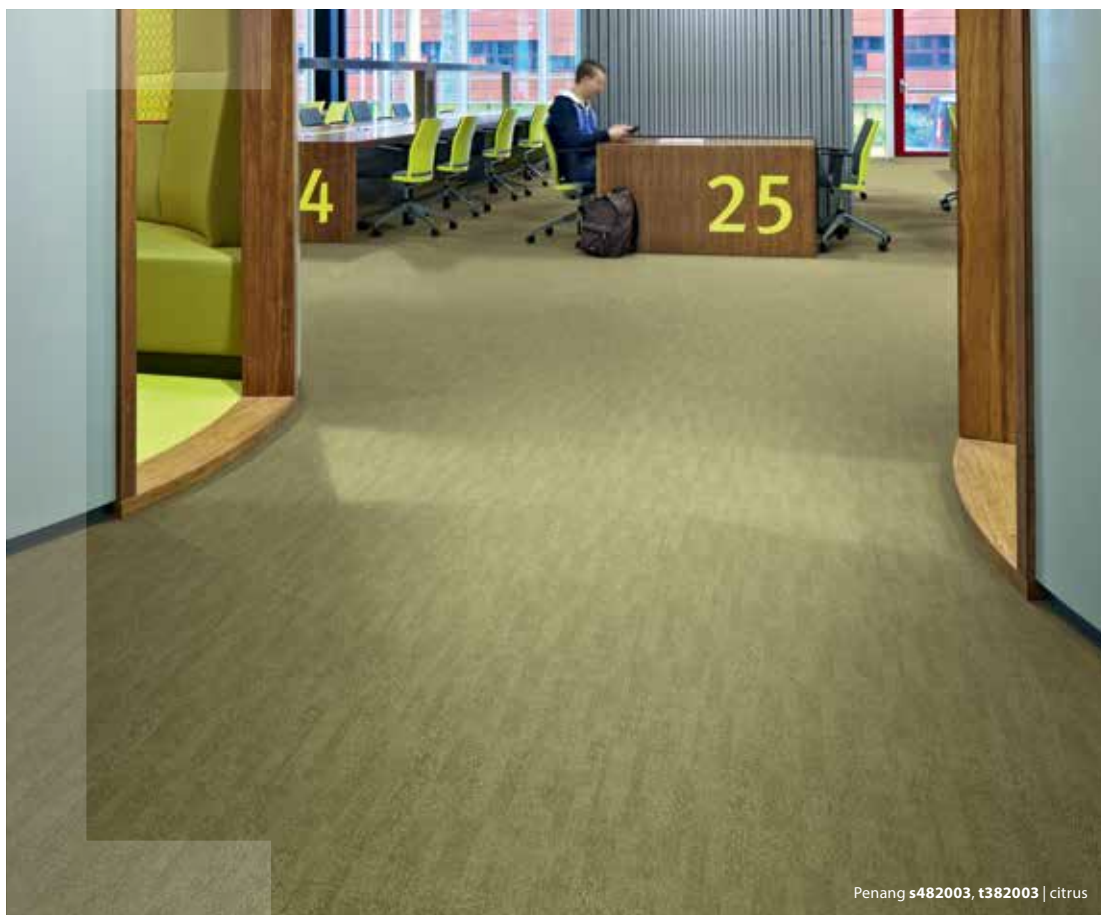


s287006 | shock | LRV 5

flotex® colour penang



Flotex Penang offers a stunning look for any modern environment. It creates a subtle linear effect and comes in a range of rich modern shades.



s482006 | sage | LRV 35
t382006



s482003 | citrus | LRV 21
t382003



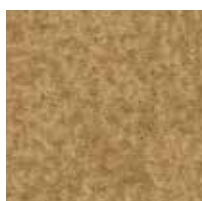
s482009 | mineral | LRV 16
t382009



s482010 | evergreen | LRV 7
t382010



s482025 | forest | LRV 6
t382025



s482022 | amber | LRV 23
t382022



s482019 | ginger | LRV 18
t382019



s482015 | beige | LRV 12
t382015



s482016 | coral | LRV 16
t382016



s482023 | dusk | LRV 8
t382023



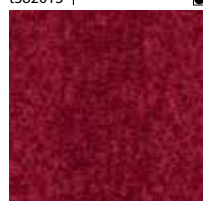
s482014 | copper | LRV 4
t382014



s482073 | brick | LRV 5
t382073



s482013 | berry | LRV 5
t382013



s482012 | red | LRV 4
t382012

Description	Flocked flooring
Dimensions	Sheet: Roll width 2m Roll length ≤ 30m Tile: 50cm x 50cm (3m² per box) 60 x 60cm & 100 x 100cm available on request
Total thickness	ISO 1765 Sheet: 4.3mm Tile: 5.3mm
Slip resistance	Pendulum test Wet – low slip risk
Collection size	34
Application	EN 1307 Class 33
Impact sound reduction	EN ISO 717-2 Sheet: ΔLw = 20 dB Tile: ΔLw = 19 dB
CE	EN 14041
Reaction to fire	EN 13501-1 B _{fl} -s1
Slip resistance	EN 13893 DS: ≥0.30
Body voltage	EN ISO 10965 < 2 kV

Sheet Tile



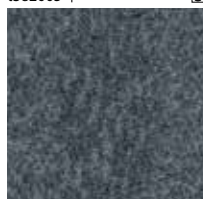
Penang s482014, t382014 | copper



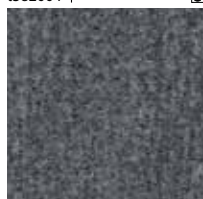
s482017 | nimbus LRV 14
t382017



s482005 | smoke LRV 14
t382005



s482004 | mercury LRV 10
t382004



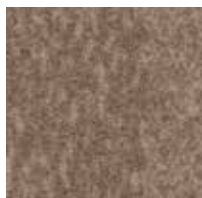
s482007 | zinc LRV 9
t382007



s482031 | ash LRV 5
t382031



s482001 | anthracite LRV 3
t382001



s482018 | bamboo LRV 21
t382018



s482021 | silver LRV 15
t382021



s482020 | shale LRV 10
t382020



s482037 | grey LRV 10
t382037



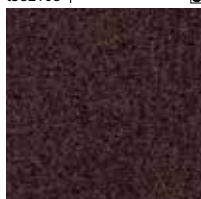
s482002 | concrete LRV 5
t382002



s482075 | flax LRV 15
t382075



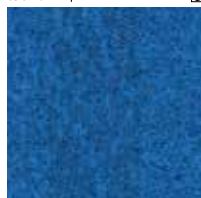
s482108 | pepper LRV 11
t382108



s482114 | chocolate LRV 3
t382114



s482011 | sapphire LRV 17
t382011



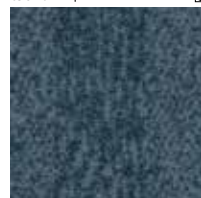
s482026 | neptune LRV 10
t382026



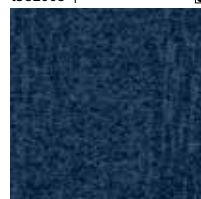
s482024 | purple LRV 5
t382024



s482044 | gull LRV 12
t382044



s482008 | tempest LRV 8
t382008



s482116 | azure LRV 4
t382116



BREEAM ratings

Flotex Colour – Flotex F50 tile with recycled backing (EN1307)

Flotex Colour – Flotex F200 sheet with PVC backing (EN1307)

	Commercial	Education	Health	Domestic	Retail (Durability)	Retail (Fashion)	Meets Ska criteria
Tile	B	A	A	B	B	A+	✓
Sheet	A	A+	A+	A	A	A+	✓



Sheet only

Usage classification

● Superior appearance rating ◐ Good appearance rating ◑ Moderate appearance rating

For more information see page 37.



s = Sheet t = Tile


Our recommended adhesive for Flotex Sheet is 540 Eurosafe Special or 640 Eurostar Special. For Flotex tiles our recommended adhesive is 542 Eurofix Tack Plus.

Full technical specifications are available at www.forbo-flooring.co.uk/downloads

Please note: Digital representations may vary from the actual product.

Please order a sample to see the full effect. Contact 0800 731 2369.



Description	Flocked flooring	
Dimensions	Sheet: Roll width 2m Roll length $\leq 30\text{m}$	
	Tile: 50cm x 50cm (3m ² per box) 60 x 60cm & 100 x 100cm available on request	
Total thickness	ISO 1765	Sheet: 4.3mm Tile: 5.3mm
Slip resistance	Pendulum test	Wet – low slip risk
Collection size	31	
Application	EN 1307	Class 33
Impact sound reduction	EN ISO 717-2	Sheet: $\Delta L_w = 20\text{ dB}$ Tile: $\Delta L_w = 19\text{ dB}$
	EN 14041	
Reaction to fire	EN 13501-1	B _{fl} -s1
Slip resistance	EN 13893	DS: ≥ 0.30
Body voltage	EN ISO 10965	< 2 kV





s290030 | spa LRV 34
t590030



s290021 | aqua LRV 29
t590021



s290014 | lime LRV 36
t590014



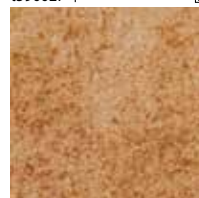
s290027 | amber LRV 22
t590027



s290018 | fossil LRV 24
t590018



s290016 | apple LRV 24
t590016



s290008 | saffron LRV 28
t590008



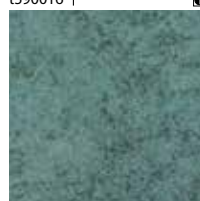
s290029 | salmon LRV 13
t590029



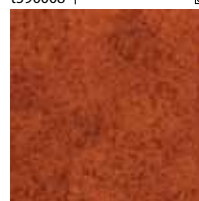
s290025 | riviera LRV 20
t590025



s290001 | sky LRV 15
t590001



s290004 | menthol LRV 17
t590004



s290024 | fire LRV 11
t590024



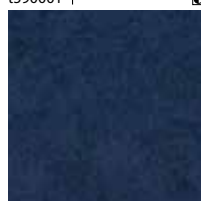
s290031 | cherry LRV 6
t590031



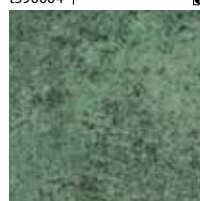
s290017 | crystal LRV 16
t590017



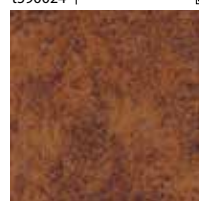
s290022 | condor LRV 10
t590022



s290015 | azure LRV 4
t590015



s290009 | moss LRV 13
t590009



s290005 | melon LRV 10
t590005



s290003 | red LRV 5
t590003



BREEAM ratings

Flotex Colour – Flotex F50 tile with recycled backing (EN1307)

Flotex Colour – Flotex F200 sheet with PVC backing (EN1307)

	Commercial	Education	Health	Domestic	Retail (Durability)	Retail (Fashion)	Meets Ska criteria
Tile	B	A	A	B	B	A+	✓
Sheet	A	A+	A+	A	A	A+	✓



Sheet only

Usage classification

● Superior appearance rating ● Good appearance rating □ Moderate appearance rating

For more information see page 37.

s = Sheet t = Tile

Our recommended adhesive for Flotex Sheet is 540 Eurosafe Special or 640 Eurostar Special. For Flotex tiles our recommended adhesive is 542 Eurofix Tack Plus. Full technical specifications are available at www.forbo-flooring.co.uk/downloads. Please note: Digital representations may vary from the actual product. Please order a sample to see the full effect. Contact 0800 731 2369.



A special range of 9 flocked floor coverings that all deliver the appearance of a real wood floor.

The range includes timber designs to suit everyone's needs and colour schemes, from beech and blackened oak to antique pine and european white wood.

Description	Flocked flooring	
Dimensions	Roll width 2m Roll length ≤ 30m	
Total thickness	ISO 1765	4.3mm
Slip resistance	Pendulum test	Wet – low slip risk
Collection size	9	
Application	EN 1307	Class 33
Impact sound reduction	EN ISO 717-2	ΔLw = 20 dB
CE	EN 14041	
Reaction to fire	EN 13501-1	B _f -s1
Slip resistance	EN 13893	DS: ≥0.30
Body voltage	EN ISO 10965	< 2 kV



Flotex Naturals 010037 | blackened oak
+ Flotex Vision Image Pavillion 000756 | titanium



010039 | european white wood Pattern repeat: 200 x 150cm LRV 23



010041 | smoked beech Pattern repeat: 200 x 150cm LRV 28



010036 | american oak Pattern repeat: 200 x 150cm LRV 20



010002 | reclaimed pine Pattern repeat: 200 x 155cm LRV 21



010035 | distressed oak Pattern repeat: 200 x 150cm LRV 19



010040 | antique pine Pattern repeat: 200 x 150cm LRV 12



010037 blackened oak Pattern repeat: 200 x 150cm LRV 7



BREEAM ratings

Flotex Naturals – Flotex HD sheet with PVC backing (EN1307)

	Commercial	Education	Health	Domestic	Retail (Durability)	Retail (Fashion)	Meets Ska criteria
Sheet	A	A	A	B	A	A+	✓

Usage classification

● Superior appearance rating ● Good appearance rating ○ Moderate appearance rating

For more information see page 37.

Our recommended adhesive for Flotex Sheet is 540 Eurosafe Special or 640 Eurostar Special.

Full technical specifications are available at www.forbo-flooring.co.uk/downloads

Please note: Digital representations may vary from the actual product.

Please order a sample to see the full effect. Contact 0800 731 2369.



PROJECT:
Primus

LOCATION:
Estonia

DESIGNER: **Taavi Aunre + Mari Koger**

FLOORING MATERIAL:
Flotex Vision Bespoke

See page 32 for the full Flotex Vision Bespoke range.



PROJECT:
Erskine Court

LOCATION:
Southampton

DESIGNER: **Daring Design UK**

FLOORING MATERIAL:
Flotex Naturals **010036** | American oak +
Flotex Metro sheet **s246032** | petrol +
s246025 | tangerine + **s246019** | citrus

See page 16 for the full Flotex Naturals range and page 10 for the Metro range.



PROJECT:
Longmoore Primary School

LOCATION:
Liverpool

DESIGNER: **Year one student Emma**

FLOORING MATERIAL:
Flotex Metro tile **t546031** | cherry + **t546020** |
lagoon + **t546034** | lilac + **t546036** | gold +
t546025 | tangerine + **t546033** | emerald

See page 10 for the full Flotex Metro range.



Flotex linear complexity t550007 | blue

Flotex, more than any of our products, fulfils our ambition to contribute to creating better indoor environments by committing to the health and well-being of all individuals living and working in indoor spaces. Flotex achieves this through excellent hygiene and sound absorbing qualities, phthalate-free products, the certification by Allergy UK for the positive effects it has on allergy sufferers, and a wide range of stimulating designs and sympathetic colours which can create inspiring interiors.



**COMMITTED
TO THE HEALTH
OF ONE**
WWW.FORBO-FLOORING.CO.UK/CHO

FLOTEX LINEAR COLLECTION AT A GLANCE

flotex® linear

integrity²

Muted colours, stylish design – Integrity² offers both. Create understated flooring designs using tessellation for this range. The effect is a subtle, sophisticated linear effect.



flotex® linear

complexity

Whether you choose the familiar tessellated style or the more unusual brick method, Complexity will add a striking and intriguing effect to any commercial space. The linear design has been created to sit alongside Integrity² for maximum flexibility.



flotex® linear

pinstripe

With its subtle, tailored design, Pinstripe can be installed brick, tessellated or half-drop to achieve very different aesthetic effects. This distinctive and versatile carpet tile is equally at home in offices, retail or leisure environments as it's a style that complements contemporary floor spaces, both large and small.



flotex® linear

stratus

The variety of installation methods available for Stratus opens up a huge number of flooring design options and, when used alongside colours from the contemporary Cirrus design, the creative options become almost infinite.



flotex® linear

cirrus

The Cirrus design is ideal for large scale installations and also offers a wide choice of fitting methods for additional flexibility. When used in combination with the Stratus design, colour coordinated solutions can easily be created.



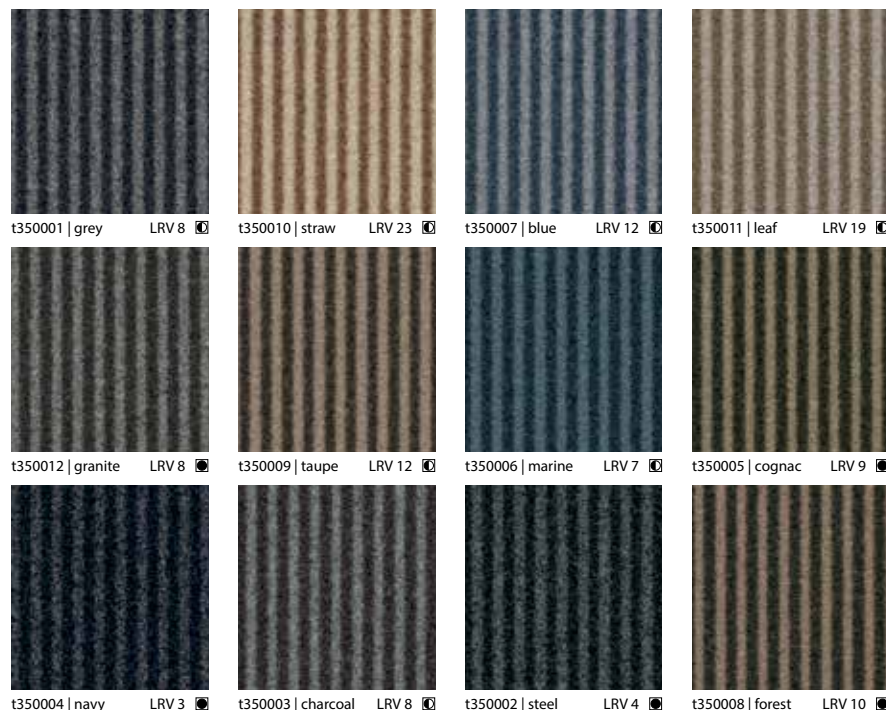
flotex® linear

integrity²



Muted colours, stylish design – Integrity² offers both. Create understated flooring designs using tessellation for this range. The effect is a subtle, sophisticated linear effect.

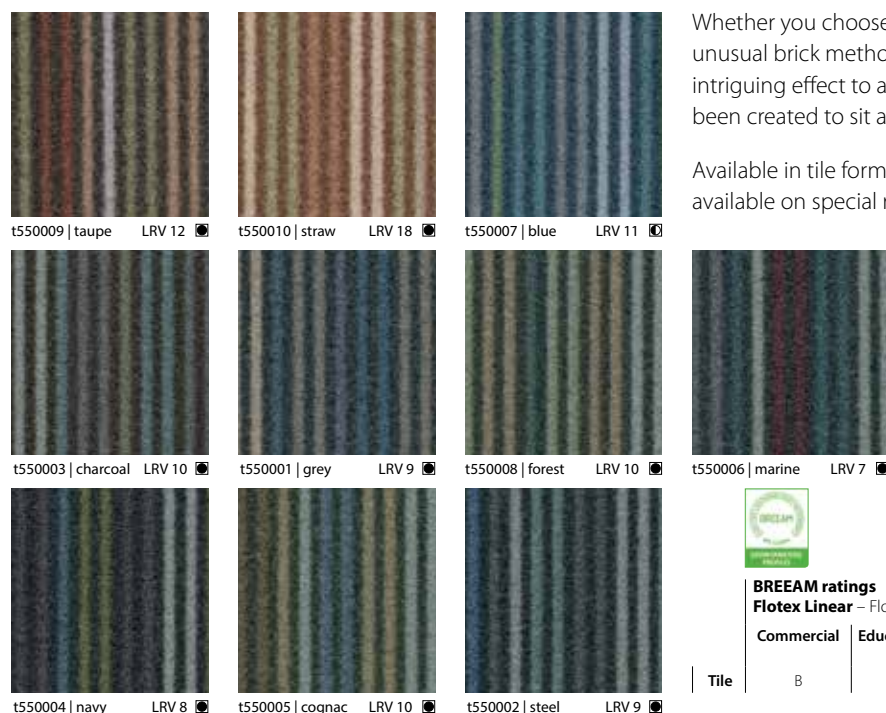
Available in tile format. 60cm x 60cm and 100cm x 100cm available on special request.



Description	Flocked flooring	
Dimensions	Tile: 50cm x 50cm (3m² per box) 60 x 60cm & 100 x 100cm available on request	
Total thickness	ISO 1765	5.3mm
Slip resistance	Pendulum test	Wet – low slip risk
Collection size	12 (Integrity) 10 (Complexity)	
Application	EN 1307	Class 33
Impact sound reduction	EN ISO 717-2	ΔLw = 19 dB
CE	EN 14041	
Reaction to fire	EN 13501-1	B _{fl} -s1
Slip resistance	EN 13893	DS: ≥0.30
Body voltage	EN ISO 10965	< 2 kV
Integrity		
Complexity		

flotex® linear

complexity



Whether you choose the familiar tessellated style or the more unusual brick method, Complexity will add a striking and intriguing effect to any commercial space. The linear design has been created to sit alongside Integrity² for maximum flexibility.

Available in tile format. 60cm x 60cm and 100cm x 100cm available on special request.



BREEAM ratings

Flotex Linear – Flotex F50 tile with recycled backing (EN1307)

	Commercial	Education	Health	Domestic	Retail (Durability)	Retail (Fashion)	Meets Ska criteria
Tile	B	A	A	B	B	A+	✓

flotex® linear

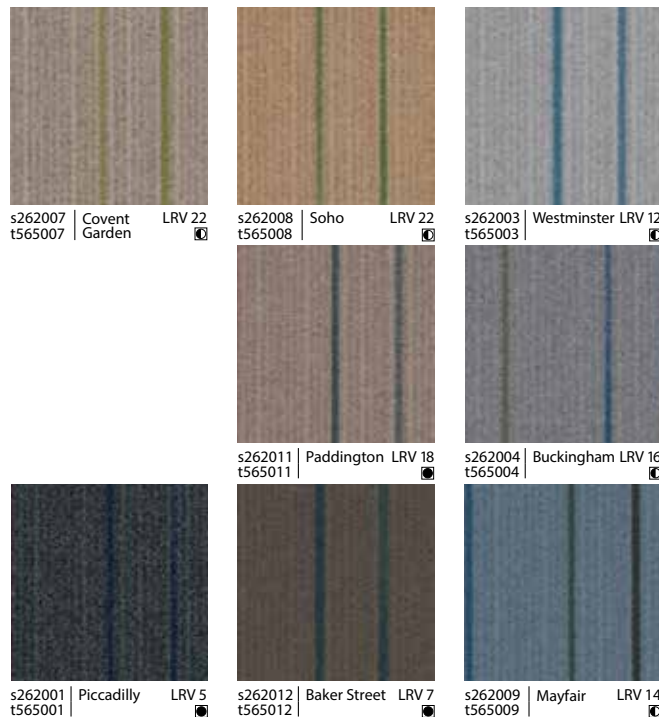
pinstripe

Flotex Linear

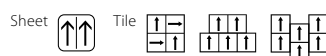


With its subtle, tailored design, Pinstripe can be installed brick, tessellated or half-drop to achieve very different aesthetic effects. This distinctive and versatile carpet tile is equally at home in offices, retail or leisure environments as it's a style that complements contemporary floor spaces, both large and small.

Available in sheet and tile format. Tiles also available in 60cm x 60cm and 100cm x 100cm upon request. Pattern repeat for sheet is 52.5cm x 50cm.



Description	Flocked flooring
Dimensions	Sheet: Roll width 2m Roll length ≤ 30m Tile: 50cm x 50cm (3m² per box) 60 x 60cm & 100 x 100cm available on request
Total thickness	ISO 1765 Sheet: 4.3mm Tile: 5.3mm
Slip resistance	Pendulum test Wet – low slip risk
Collection size	12
Application	EN 1307 Class 33
Impact sound reduction	EN ISO 717-2 Sheet: ΔLw = 20 dB Tile: ΔLw = 19 dB
CE	EN 14041
Reaction to fire	EN 13501-1 B _{fl} -s1
Slip resistance	EN 13893 DS: ≥ 0.30
Body voltage	EN ISO 10965 < 2 kV



BREEAM ratings

Flotex Linear – Flotex F50 tile with recycled backing (EN1307)

Flotex Linear – Flotex F200 sheet with PVC backing (EN1307)



Sheet only

	Commercial	Education	Health	Domestic	Retail (Durability)	Retail (Fashion)	Meets Ska criteria
Tile	B	A	A	B	B	A+	✓
Sheet	A	A+	A+	A	A	A+	✓

Usage classification

● Superior appearance rating ● Good appearance rating ○ Moderate appearance rating

For more information see page 37.

s = Sheet t = Tile

Our recommended adhesive for Flotex Sheet is 540 Eurosafe Special or 640 Eurostar Special. For Flotex tiles our recommended adhesive is 542 Eurofix Tack Plus.

Full technical specifications are available at www.forbo-flooring.co.uk/downloads

Please note: Digital representations may vary from the actual product.

Please order a sample to see the full effect. Contact 0800 731 2369.

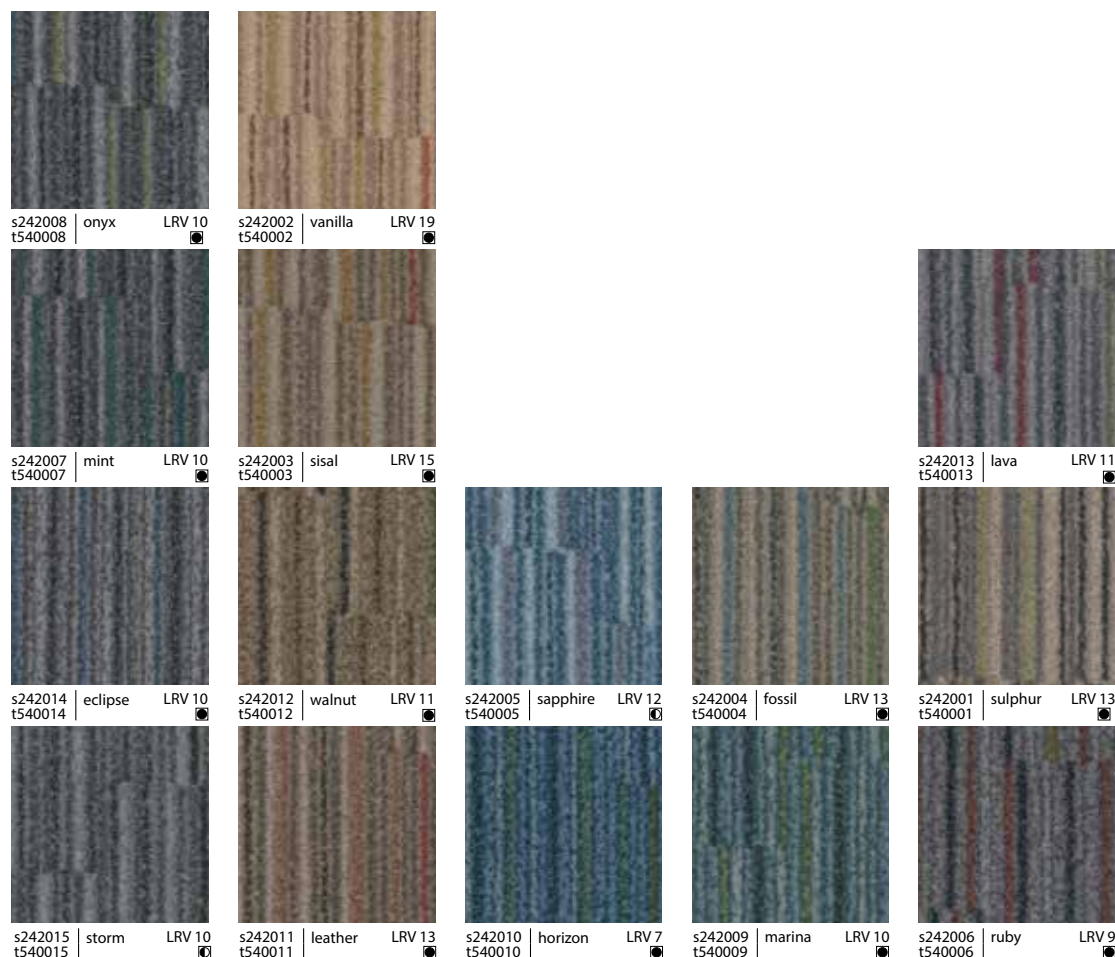
flotex® linear

stratus



The variety of installation methods available for Stratus opens up a huge number of flooring design options and, when used alongside colours from the contemporary Cirrus design, the creative options become almost infinite.

Available in sheet and tile format. Tiles also available in 60cm x 60cm and 100cm x 100cm upon request. Pattern repeat for sheet is 35cm x 25cm.

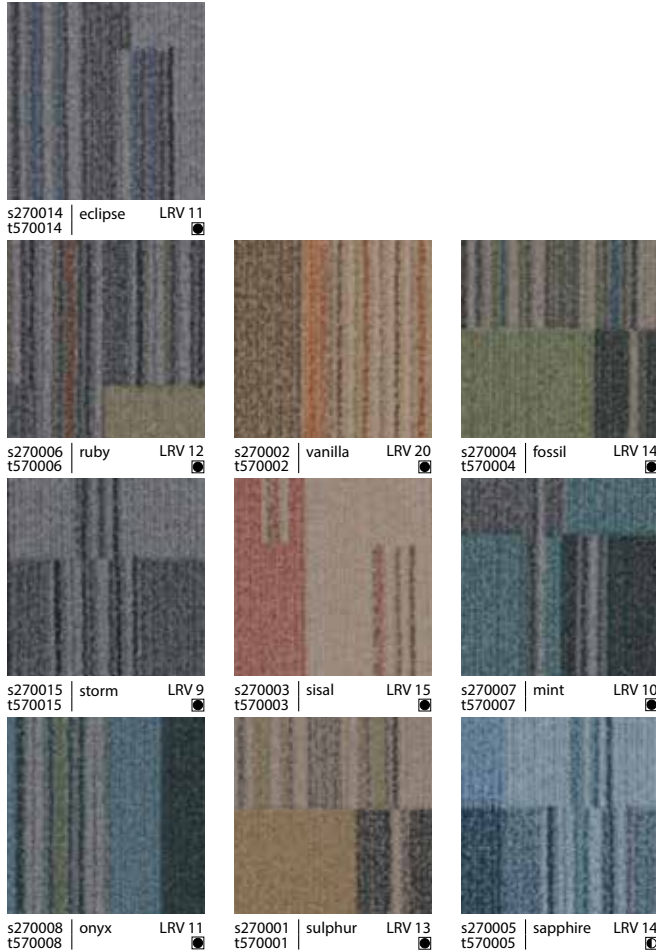


Description	Flocked flooring	
Dimensions	Sheet: Roll width 2m	Roll length ≤ 30m
	Tile: 50cm x 50cm (3m ² per box)	60 x 60cm & 100 x 100cm available on request
Total thickness	ISO 1765	Sheet: 4.3mm Tile: 5.3mm
Slip resistance	Pendulum test	Wet – low slip risk
Collection size	15	
Application	EN 1307	Class 33
Impact sound reduction	EN ISO 717-2	Sheet: ΔLw = 20 dB Tile: ΔLw = 19 dB
CE	EN 14041	
Reaction to fire	EN 13501-1	B _{fl} -s1
Slip resistance	EN 13893	DS: ≥0.30
Body voltage	EN ISO 10965	< 2 kV
Sheet		
Tile		



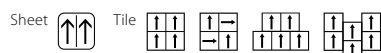
The Cirrus design is ideal for large scale installations and also offers a wide choice of fitting methods for additional flexibility. When used in combination with the Stratus design, colour coordinated solutions can easily be created.

Available in sheet and tile format. Tiles also available in 100cm x 100cm upon request. Pattern repeat for sheet is 105cm x 200cm.



Cirrus s270003, t570003 | sisal

Description	Flocked flooring
Dimensions	Sheet: Roll width 2m Roll length ≤ 30m Tile: 50cm x 50cm (3m² per box) 60 x 60cm & 100 x 100cm available on request
Total thickness	ISO 1765 Sheet: 4.3mm Tile: 5.3mm
Slip resistance	Pendulum test Wet – low slip risk
Collection size	10
Application	EN 1307 Class 33
Impact sound reduction	EN ISO 717-2 Sheet: ΔLw = 20 dB Tile: ΔLw = 19 dB
CE	EN 14041
Reaction to fire	EN 13501-1 B _{fl} -s1
Slip resistance	EN 13893 DS: ≥0.30
Body voltage	EN ISO 10965 < 2 kV



BREEAM ratings

Flotex Linear – Flotex F50 tile with recycled backing (EN1307)

Flotex Linear – Flotex F200 sheet with PVC backing (EN1307)

	Commercial	Education	Health	Domestic	Retail (Durability)	Retail (Fashion)	Meets Ska criteria
Tile	B	A	A	B	B	A+	✓
Sheet	A	A+	A+	A	A	A+	✓



Sheet only

Usage classification

☒ Superior appearance rating
 ☒ Good appearance rating
 ☐ Moderate appearance rating

For more information see page 37.

s = Sheet t = Tile

Our recommended adhesive for Flotex Sheet is 540 Eurosafe Special or 640 Eurostar Special. For Flotex tiles our recommended adhesive is 542 Eurofix Tack Plus.

Full technical specifications are available at www.forbo-flooring.co.uk/downloads

Please note: Digital representations may vary from the actual product.

Please order a sample to see the full effect. Contact 0800 731 2369.



Flotex planks Box-cross 133007 | granite

flotex® planks box-cross

With one design you can transform a space. With Box-cross every plank is unique, containing a pattern that subtly changes from cross to box, fading one into the other along the length of the plank whilst a diagonal texture plays across the width, blending the planks together.



26

flotex® planks concrete

A concrete look like never before. Highly detailed, warm and tactile but with the durability to rival a real concrete floor. Experiment with its four colourways to create a striking look or choose a single colourway for an urban, minimal aesthetic.



27

Flotex, more than any of our products, fulfils our ambition to contribute to creating better indoor environments by committing to the health and well-being of all individuals living and working in indoor spaces. Flotex achieves this through excellent hygiene and sound absorbing qualities, phthalate-free products, the certification by Allergy UK for the positive effects it has on allergy sufferers, and a wide range of stimulating designs and sympathetic colours which can create inspiring interiors.



**COMMITTED
TO THE HEALTH
OF ONE**
WWW.FORBO-FLOORING.CO.UK/CHO

FLOTEX PLANKS COLLECTION AT A GLANCE

flotex® planks

lava

Lava is all about texture and colour, giving you an opportunity to define space, highlight areas and explore creative design combinations in every way possible. From subtle shades to vibrant brights, Lava brings a palette of choice to the floor.



flotex® planks

seagrass

The ultimate playground when it comes to floor designs. Seagrass is happy when it is laid as herringbone or even double herringbone, but also as half-drop or weave. The creative options are almost limitless. Although the colourways have been designed to be easily combined, a single colour floor design looks equally sophisticated.



flotex® planks

triad

This pattern offers you the creative freedom to mix and match, combining colours and installation methods easily to customise your floor. It looks great laid half-drop, herringbone or weave and has a range of exciting colourways with highlight options. There's also a unique embossed version to add more texture and tactility to your floor.



flotex® planks

wood

A wood pattern on a textile floor? You will be amazed how good it looks and also how it feels and performs. Soft underfoot and without the disturbance of the noise of foot traffic, it's the ideal floor for busy spaces in offices, hotels rooms, public buildings and elderly care locations. It's a mindset change. Get the looks of real wood with the advantages of a textile floor.



flotex® planks

box-cross



With one design you can transform a space. With Box-cross every plank is unique, containing a pattern that subtly changes from cross to box, fading one into the other along the length of the plank whilst a diagonal texture plays across the width, blending the planks together.

Plank size
100 x 25 cm



Description	Flocked flooring	
Dimensions	100cm x 25cm (2.5m ² per box)	
Total thickness	ISO 1765	5.3mm
Slip resistance	Pendulum test	Wet – low slip risk
Collection size	15	
Application	EN 1307	Class 33
Impact sound reduction	EN ISO 717-2	ΔL _w = 19 dB
CE	EN 14041	
Reaction to fire	EN 13501-1	B _{fl} -s1
Slip resistance	EN 13893	DS: ≥0.30
Body voltage	EN ISO 10965	< 2 kV



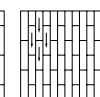
Half-drop
installation 1



Half-drop
installation 2



Random drop
installation 1



Random drop
installation 2

Usage classification

- ☒ Superior appearance rating
- ☒ Good appearance rating
- ☒ Moderate appearance rating

For more information see page 37.



133009 | petrol LRV 7



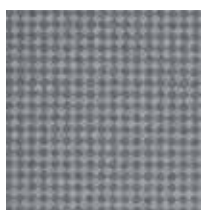
133005 | linen LRV 20



133003 | ocean LRV 6



133015 | gold LRV 17



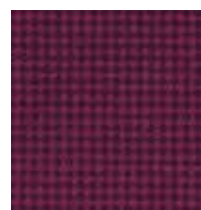
133002 | pearl LRV 25



133007 | granite LRV 7



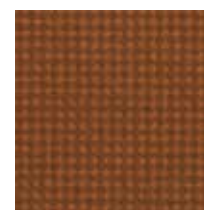
133004 | biscuit LRV 20



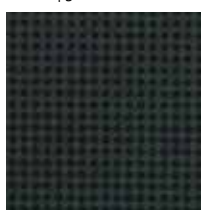
133013 | mulberry LRV 4



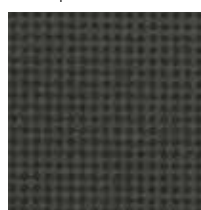
133006 | lagoon LRV 5



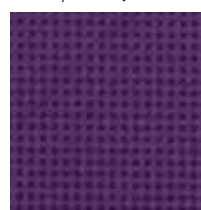
133001 | amber LRV 11



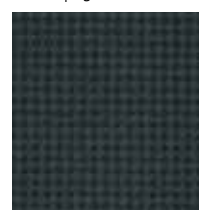
133011 | anthracite LRV 4



133010 | seal LRV 7



133012 | purple LRV 4



133008 | blueberry LRV 4



133014 | forest LRV 7

flotex® planks

concrete

Flotex Planks



A concrete look like never before. Highly detailed, warm and tactile but with the durability to rival a real concrete floor. Experiment with its four colourways to create a striking look or choose a single colourway for an urban, minimal aesthetic.

Plank size
100 x 25 cm



Concrete 139001 | cloud + 139002 | thunder + 139003 | smoke

Our recommended adhesive for Flotex planks is 542 Eurofix Tack Plus. Full technical specifications are available at www.forbo-flooring.co.uk/downloads

Please note: Digital representations may vary from the actual product. Please order a sample to see the full effect. Contact 0800 731 2369.



139001 | cloud LRV 18



139003 | smoke LRV 16



139004 | storm LRV 11



139002 | thunder LRV 11

Description	Flocked flooring	
Dimensions	100cm x 25cm (2.5m² per box)	
Total thickness	ISO 1765	5.3mm
Slip resistance	Pendulum test	Wet – low slip risk
Collection size	4	
Application	EN 1307	Class 33
Impact sound reduction	EN ISO 717-2	$\Delta L_w = 19$ dB
CE	EN 14041	
Reaction to fire	EN 13501-1	B _{fl} -s1
Slip resistance	EN 13893	DS: ≥ 0.30
Body voltage	EN ISO 10965	< 2 kV



Half-drop installation 1



Half-drop installation 2



Herringbone installation 1



Herringbone installation 2



Double herringbone installation 1



Double herringbone installation 2



Weave installation 1



Weave installation 2

flotex® planks

lava



Lava is all about texture and colour, giving you an opportunity to define space, highlight areas and explore creative design combinations in every way possible. From subtle shades to vibrant brights, Lava brings a palette of choice to the floor.

Plank size
100 x 25 cm



Description	Flocked flooring	
Dimensions	100cm x 25cm (2.5m ² per box)	
Total thickness	ISO 1765	5.3mm
Slip resistance	Pendulum test	Wet – low slip risk
Collection size	18	
Application	EN 1307	Class 33
Impact sound reduction	EN ISO 717-2	$\Delta L_w = 19$ dB
CE EN 14041		
Reaction to fire	EN 13501-1	B _f -s1
Slip resistance	EN 13893	DS: ≥ 0.30
Body voltage	EN ISO 10965	< 2 kV



Half-drop
installation 1



Half-drop
installation 2



Herringbone
installation 1



Herringbone
installation 2



Weave
installation 1



Weave
installation 2

Lava **145002** | Tambora + **145005** | Madeira + **145007** | Pinatubo
+ **145009** | Trident + **145010** | Thera + **145014** | Pelee

flotex® planks

seagrass

Flotex Planks



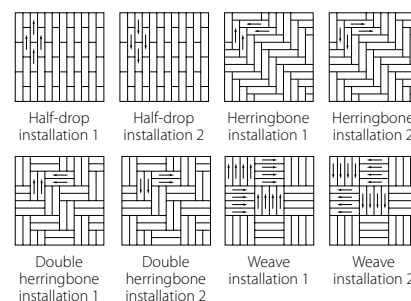
The ultimate playground when it comes to floor designs. Seagrass is happy when it is laid as herringbone or even double herringbone, but also as half-drop or weave. The creative options are almost limitless. Although the colourways have been designed to be easily combined, a single colour floor design looks equally sophisticated.

Plank size
100 x 25 cm



Seagrass 111001 | pearl + 111002 | cement + 111004 | charcoal

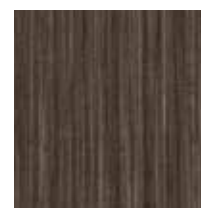
Description	Flocked flooring	
Dimensions	100cm x 25cm (2.5m² per box)	
Total thickness	ISO 1765	5.3mm
Slip resistance	Pendulum test	Wet – low slip risk
Collection size	6	
Application	EN 1307	Class 33
Impact sound reduction	EN ISO 717-2	$\Delta L_w = 19$ dB
CE	EN 14041	
Reaction to fire	EN 13501-1	B _{fl} -s1
Slip resistance	EN 13893	DS: ≥ 0.30
Body voltage	EN ISO 10965	< 2 kV



111001 | pearl LRV 26 ☐



111003 | almond LRV 19 ●



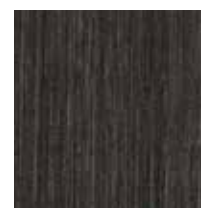
111005 | walnut LRV 8 ●



111004 | charcoal LRV 9 ●



111002 | cement LRV 13 ●



111006 | liquorice LRV 5 ●

Usage classification

● Superior appearance rating ● Good appearance rating ☐ Moderate appearance rating
For more information see page 37.

Our recommended adhesive for Flotex planks is 542 Eurofix Tack Plus.
Full technical specifications are available at www.forbo-flooring.co.uk/downloads
Please note: Digital representations may vary from the actual product.
Please order a sample to see the full effect. Contact 0800 731 2369.

flotex® planks

triad



This pattern offers you the creative freedom to mix and match, combining colours and installation methods easily to customise your floor. It looks great laid half-drop, herringbone or weave and has a range of exciting colourways with highlight options. There's also a unique embossed version to add more texture and tactility to your floor.

All colourways in the Triad collection feature a superior appearance rating.

Plank size
100 x 25 cm

Description	Flocked flooring	
Dimensions	100cm x 25cm (2.5m ² per box)	
Total thickness	ISO 1765	5.3mm
Slip resistance	Pendulum test	Wet – low slip risk
Collection size	19	
Application	EN 1307	Class 33
Impact sound reduction	EN ISO 717-2	ΔLw = 19 dB
CE	EN 14041	
Reaction to fire	EN 13501-1	B _{fl} -s1
Slip resistance	EN 13893	DS: ≥0.30
Body voltage	EN ISO 10965	< 2 kV



131015 | stone LRV 18



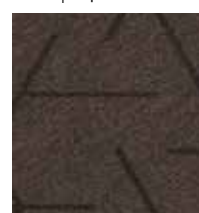
131001 | red LRV 8



131010 | taupe LRV 11



131004 | amber LRV 12



131009 | bronze LRV 6



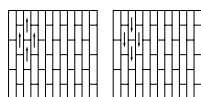
131016 | mint LRV 12



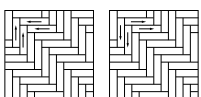
131006 | silver LRV 8



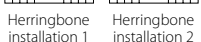
131012 | blue line LRV 8



Half-drop installation 1



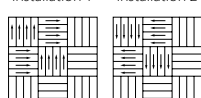
Half-drop installation 2



Herringbone installation 1



Herringbone installation 2



Weave installation 1



Weave installation 2

Usage classification

- Superior appearance rating
- Good appearance rating
- Moderate appearance rating

For more information see page 37.



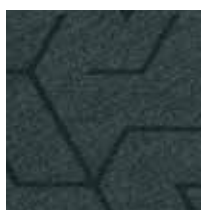
131007 | steel LRV 9



131005 | platinum LRV 9



131017 | anthracite LRV 5



131008 | shadow LRV 6



121001 | embossed zinc LRV 8



131011 | red line LRV 9



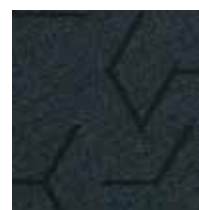
131003 | green LRV 10



131014 | amber line LRV 8



131002 | blue LRV 7



131018 | navy LRV 4



131013 | green line LRV 8

flotex® planks

wood

Flotex Planks



A wood pattern on a textile floor? You will be amazed how good it looks and also how it feels and performs. Soft underfoot and without the disturbance of the noise of foot traffic, it's the ideal floor for busy spaces in offices, hotels rooms, public buildings and elderly care locations. It's a mindset change. Get the looks of real wood with the advantages of a textile floor. All installation patterns are possible, simply allow your imagination free rein to create.

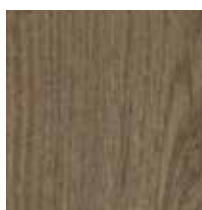
Plank size
100 x 25 cm



Wood 151001 | black wood + 151002 | grey wood + 151004 | american wood+ 151006 | antique wood



151003 | silver wood LRV 31



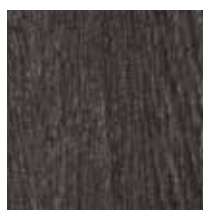
151004 | american wood LRV 15



151002 | grey wood LRV 13



151005 | red wood LRV 9



151001 | black wood LRV 8



151006 | antique wood LRV 9

Description	Flocked flooring	
Dimensions	100cm x 25cm (2.5m² per box)	
Total thickness	ISO 1765	5.3mm
Slip resistance	Pendulum test	Wet – low slip risk
Collection size	6	
Application	EN 1307	Class 33
Impact sound reduction	EN ISO 717-2	$\Delta L_w = 19$ dB
CE	EN 14041	
Reaction to fire	EN 13501-1	B _{fl} -s1
Slip resistance	EN 13893	DS: ≥ 0.30
Body voltage	EN ISO 10965	< 2 kV



Half-drop
installation 1



Half-drop
installation 2



Herringbone
installation 1



Herringbone
installation 2



Double
herringbone
installation 1



Double
herringbone
installation 2



Weave
installation 1



Weave
installation 2



the *Art* of FLOCKING

Flotex Vision offers a unique collection of over 500 digitally printed floor designs, ranging from florals and vibrant patterns to realistic images of natural materials.

With over 70 million fibres per square metre, Flotex has a highly dense pile so our unique digital printing technique can achieve an image quality of up to 650dpi – perfect for creating that ‘wow’ factor!

FLOCK ‘n’ Roll

Flotex is the ideal blank canvas for designers to create eye-catching flooring concepts. Our designer collection offers up to the minute artworks for the floor from world renowned designers. You can also create something bespoke for a truly individual solution from just 60m².

Creatively Flotex will enhance any interior whilst our precision-driven manufacturing process ensures high quality and performance.

What will do you with the freedom?



Flotex Vision Image 000402 | zebra



Flotex Vision Floral Botanical 840003 | orchid + Floret 670003 | orchid



BREEAM ratings
Flotex F200 HD – sheet with PVC backing (EN1307)

Commercial	Education	Health	Domestic	Retail (Durability)	Retail (Fashion)	Meets Ska criteria
A	A	A	B	A	A+	✓



Flotex Vision Shape Curve 930008 | charcoal

THE FLOTEX VISION **DIGITAL LIBRARY**



With over 500 individual items to choose from, plus the option to create your own colourway of several of the designs, or even a completely bespoke design, a sample book is never able to capture all the options that are available. Therefore Flotex Vision is available in a flexible and 'always up-to-date' online digital library.

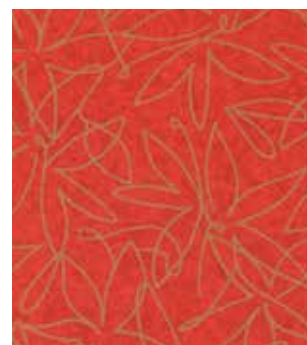
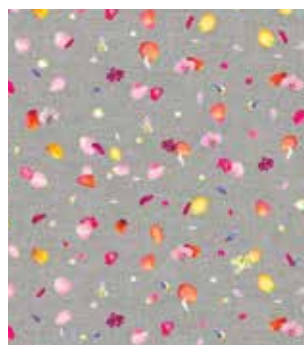
The designs in Flotex Vision fall into seven broad categories, each of them representing a different design direction. New Flotex Vision designs will be regularly added to our online library which already contains over 500 different designs and colourways.

All the designs in our online Flotex Vision library are available from only 6m² and are all made to order. Lead time on request.

Here are our seven design directions:

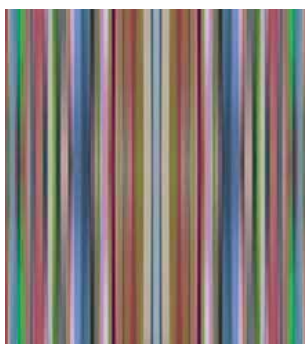
Floral

A selection of eight floral designs, ranging from abstract, graphic flower motifs to romantic images of roses and butterflies. There are also flower designs that are ideal for children's nurseries. Each of the eight design types in this category is available in a variety of colourways.



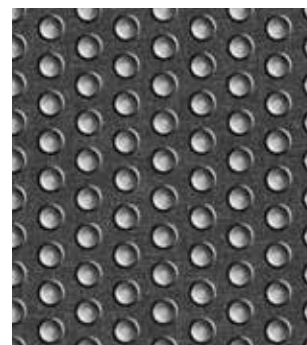
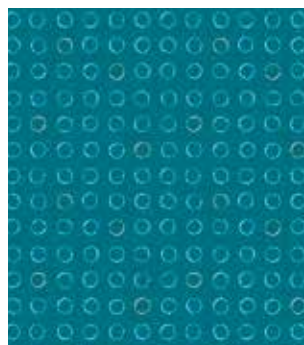
Linear

Eight line or stripe designs, each with their own characteristics, ranging from muted and sophisticated colourways to very complex and multi-colour.



Shape

A collection of organic shapes and motifs delivering beautiful all-over patterns, including both contemporary and traditional designs.





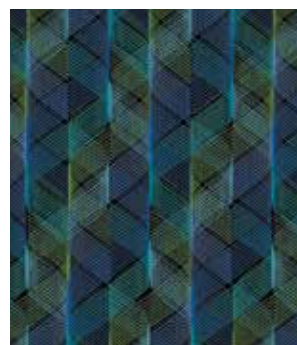
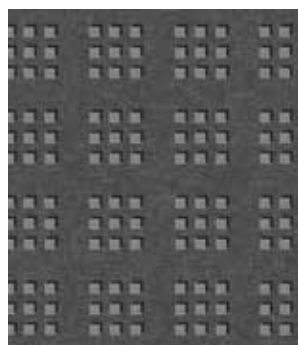
Naturals

This collection offers photorealistic images of natural materials such as wood, stone, ceramics or cork floors. The design technology creates amazingly realistic floors but with the added benefit of improved acoustics, slip resistance and reduced maintenance costs. The Naturals collection shown on page 256 represents our stocked range of wood designs.



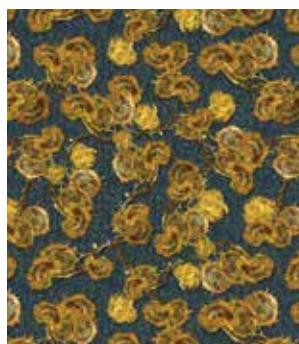
Pattern

The intricate play of networks and patterns creates a textured, non-directional visual. Each design in this category is available in a number of colourways.



Artist Collection

A range of six designs which are based on famous paintings by Van Gogh.



Image

This design category contains a wide variety of photographic images that have been transformed into interesting and unique floors. Grass, leaves, water drops, buttons or zebra skin are just some of the possibilities amongst the wide range of images.



GO ONLINE AND DISCOVER OVER 500 DESIGNS FOR YOUR FLOOR

Find your design in 5 easy steps:

1. Access www.forbo-flooring.co.uk/flotexvision
2. Click on the Flotex Vision Digital Library link
3. Choose your main design entry in the library (1 out of 8 entry options)
4. Choose the collection you like
5. Choose the colour you like... and order your sample online



Colour your vision

Simply click on the 'custom colouration' section on the Flotex Vision website and follow the simple online instructions www.forbo-flooring.co.uk/flotexvision

Note: The minimum order quantity for any Flotex bespoke order or recolouration is 60m².

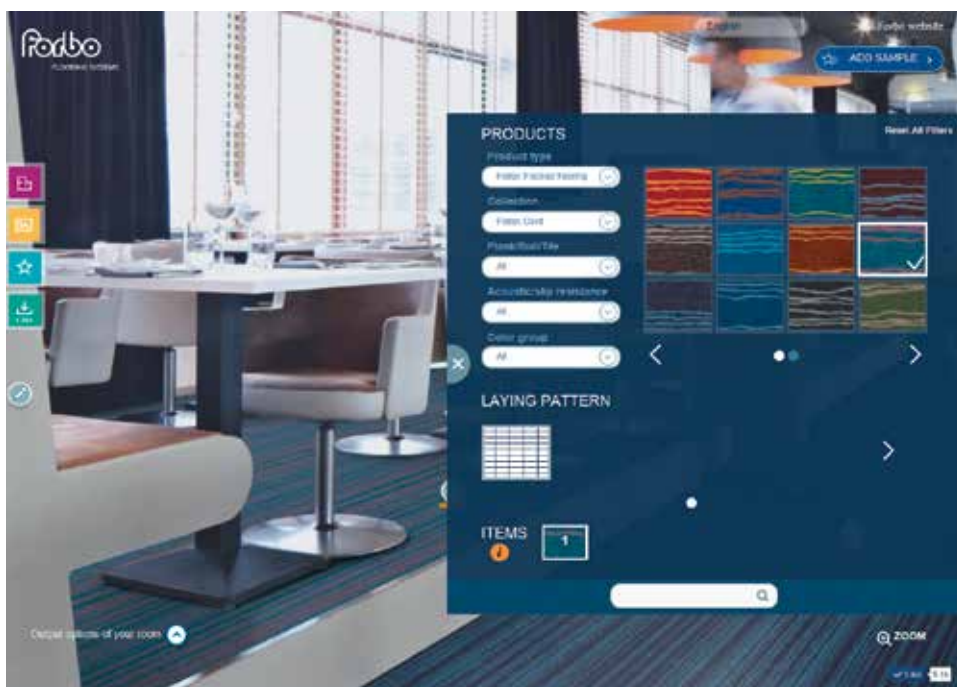
Recolour
certain designs with



Flotex vision

View rooms in hundreds of floor designs

Explore online how you can customise your floor designs.



www.forbo-flooring.co.uk/flotexvision

FLOTEX USAGE CLASSIFICATION

As with any product, colour and design influence the appearance retention of the floor. Likewise, Flotex is able to “hide” any soiling or dirt to a greater or lesser degree depending on the base colour and the visual design.

Using European (EN) approved testing methodology we have graded every item in the collection on its ability to ‘hide’ general dirt or staining that occurs during normal use depending on the application. The result is a usage classification that can be referred to when taking into consideration such things as type and level of traffic in the chosen application area. The classification is shown alongside each colour and design in this brochure.

 Superior appearance rating
  Good appearance rating
  Moderate appearance rating

Cleanable surface finish

When prescribed cleaning procedures are followed, Flotex outperforms any textile floor covering in appearance. Its smooth upright nylon 6.6 fibres allow dirt to be easily removed. No dry dirt is trapped by any loops or twists (as can happen with standard carpet) and the vacuum action reaches the very base of the pile, meaning that all dirt is removed.

The vinyl base combined with the nylon 6.6 flocked finish allows the floor covering to be fully cleaned with water and detergents. Steam cleaning or mechanical cleaning methods can also be applied resulting in cleaner floors. Flotex is therefore the only truly waterproof textile floor covering which enables the floor to be restored quickly and easily even after heavy soiling.

flotex® artline borders

With Artline you are able to make borders, creative features and delineators between colourways or even different designs. Artline is available in 11cm or 22cm widths and matches the base shades of the various Flotex Colour and Linear designs.



● 11 cm wide ● 22 cm wide

	sapphire ● 211092 ● 232092		cinnamon ● 211094 ● 232094
	electric ● 211096 ● 232096		brick ● 211073 ● 232073
	indigo ● 211016 ● 232016		berry ● 211083 ● 232083
	pink ● 211091 ● 232091		red ● 211008 ● 232008
	lilac ● 211100 ● 232100		tangerine ● 211003 ● 232003
	pebble ● 211076 ● 232076		melon ● 211072 ● 232072
	truffle ● 211093 ● 232093		acid ● 211090 ● 232090
	cocoa ● 211081 ● 232081		gold ● 211099 ● 232099
	chocolate ● 211114 ● 232114		citrus ● 211085 ● 232085
	nimbus ● 211044 ● 232044		moss ● 211087 ● 232087
	grey ● 211046 ● 232046		evergreen ● 211088 ● 232088
	ash ● 211031 ● 232031		tempest ● 211110 ● 232110
	anthracite ● 211050 ● 232050		petrol ● 211007 ● 232007

Description	Flocked flooring
Dimensions	Roll width 11/22cm Roll length ≤ 15m
Total thickness	ISO 1765 4.3mm
Slip resistance	Pendulum test Wet – low slip risk
Collection size	26
Application	EN 1307 Class 33
Impact sound reduction	EN ISO 717-2 ΔLw = 20 dB
CE	EN 14041
Reaction to fire	EN 13501-1 B _{fl} -s1
Slip resistance	EN 13893 DS: ≥0.30
Body voltage	EN ISO 10965 < 2 kV



BREEAM ratings

Flotex Artline – Flotex F200 sheet with PVC backing (EN1307)

	Commercial	Education	Health	Domestic	Retail (Durability)	Retail (Fashion)	Meets Ska criteria
Sheet	A	A+	A+	A	A	A+	✓



Sheet only



Forbo Flooring Systems is part of the Forbo Group, a global leader in flooring and movement systems, and offers a full range of flooring products for commercial and affordable housing and new build markets. High quality linoleum, vinyl, textile, flocked and entrance flooring products combine functionality, colour and design, offering total flooring solutions for any environment.

UK

Forbo Flooring UK Limited
High Holborn Road
Ripley
Derbyshire DE5 3NT

London EC1 showroom

79 St John Street, Clerkenwell
London EC1M 4NR
Tel: 0207 553 9300

For commercial enquiries:

If calling from the North,
Midlands, London & South East
Tel: 0800 0282 162
Fax: 01772 646 912

If calling from Scotland & South West
Tel: 0800 0935 258
Fax: 01592 643 999

Nuway enquiries:

Tel: 01773 740 688
Fax: 01773 740 640

Residential enquiries:

Tel: 0800 0935 846
Fax: 01592 643 999

Email: info.flooring.uk@forbo.com
www.forbo-flooring.co.uk

Samples:

Tel: 0800 731 2369
email: samples.uk@forbo.com

Ireland

Forbo Ireland Ltd
2 Deansgrange Business Park
Blackrock
Co Dublin

Tel: 00353 1 2898 898

Fax: 00353 1 2898 177

Email: info.ireland@forbo.com
www.forbo-flooring.ie

Find us on



Registered office:

Forbo Flooring UK Limited
High Holborn Road
Ripley
Derbyshire DE5 3NT
Registered in England 9200318





BY APPOINTMENT TO H.M. THE QUEEN
MANUFACTURERS OF FLOORCOVERING
FORBO FLOORING UK LTD KIRKCALDY

CI/SfB

| (43) | Tn |

May 2018



Resilient Floor Coverings

marmoleum®

creating better environments

forbo

FLOORING SYSTEMS

FORBO'S LINOLEUM BRAND

97%

natural
raw materials

72%

rapidly
renewable

43%

recycled
content

Sheet Marmoleum

Forbo's sheet Marmoleum comprises 3 collections – Marbled, Solid and Linear.

Marbled

Taking inspiration from the natural world, and offering a spectrum of over 90 colours across the Real, Vivace and Fresco ranges, the Marmoleum Marbled collection combines both subtle and striking marbled effects to create a range that provides the perfect backdrop for any commercial interior.



Solid

These five individual finishes provide the foundation for creating pure, distinctive and modern spaces. The Solid collection combines contemporary styling with a versatility that enables designers to design an elegant, natural backdrop to any interior.

The new Marmoleum Solid Cocoa collection has been awarded the iF DESIGN AWARD 2017 and the 2017 FX International Design Award for floor coverings. The iF Design award was also given to the Marmoleum Striato collection on its launch in 2016. Marmoleum Cocoa and Marmoleum Slate, both from the new Marmoleum Solid collection, have also been awarded the 2017 Red Dot Design award.



Linear

Marmoleum Linear comprising Striato Original, Striato Textura and Striato Colour is known for its distinctive directional design which is complemented perfectly by its warm natural colour palette.

The two abstract embossed textures add tactility and bring the floor finishes to life.



With our Committed to the Health of One programme, we strive to create better indoor environments and Marmoleum is a prime example of this commitment. Naturally bacteriostatic, Marmoleum does not harbour allergens and holds the Allergy UK Seal of Approval™. It has extremely low VOCs contributing to positive indoor air quality and has high LRVs which help create positive environments in which to work, live and play. Marmoleum is also protected by a unique water based finish 'Topshield2' which ensures no hiding place for dirt or bacteria.



**COMMITTED
TO THE HEALTH
OF ONE**
WWW.FORBO-FLOORING.CO.UK/CHO

MARMOLEUM COLLECTION AT A GLANCE

Acoustic & Static dissipative

(Ohmex, Acoustic, Decibel)

In addition to our standard ranges, we also offer a number of linoleum floor coverings developed to meet specific technical or comfort requirements, including static control and sound reduction.



Tile Marmoleum

(Marmoleum Modular)

Comprising 6 distinct design ranges – Lines, Textura, Slate, Shade, Marble and Colour, the Marmoleum Modular collection offers 100 x 25cm planks and 50 x 25cm and 50 x 50cm tiles to allow complete design freedom.



Off the Floor Linoleum

(Bulletin Board)

Pinboard linoleum, or Bulletin Board, offers a practical, simple solution to collect and exchange thoughts and ideas wherever people plan, create and meet. Simply share your thoughts by pinning your idea onto the wall.



Off the Floor Linoleum

(Furniture Linoleum)

Furniture Linoleum is a decorative surfacing material that can be applied to vertical, horizontal and curved surfaces, providing interior furniture with a truly distinctive and individual look.





Marmoleum is over 150 years old and is a natural floor covering that is associated with sustainability, durability, high quality and innovative design.

Discover the versatile world of Marmoleum with over 300 colours and more than 12 different structures to choose from, available in sheet and modular tile formats.

Marmoleum stands for versatility in application as well as in colour and design. What makes Marmoleum special is that it is created from 97% natural raw materials that give it its unique performance attributes.



Back to the floor

Through our Back to the Floor scheme, we can collect installation off-cuts from our Marmoleum floors and recycle them back into Forbo products at our plant in Kirkcaldy, Fife.

www.forbo-flooring.co.uk/backtothefloor





Infection control & Allergy UK

Independent testing by the University of Glasgow has proved that Marmoleum has a unique suitability for a diverse range of environments where hygiene and control of bacteria such as MRSA or E. coli is an everyday concern.

Marmoleum is also an Allergy UK approved floor covering.

For more information on infection control and Allergy UK visit

www.forbo-flooring.co.uk/marmoleum



Topshield2

All Marmoleum floors include Topshield2, a double UV-cured finish which is scratch and scuff resistant, easy to maintain and ensures a long lasting appearance retention.

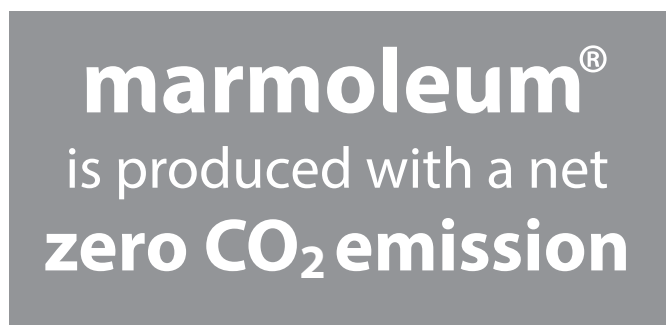
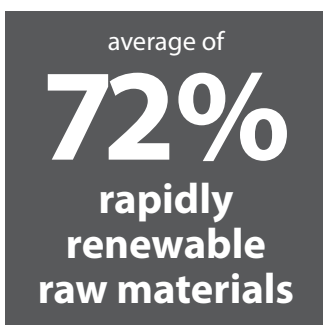
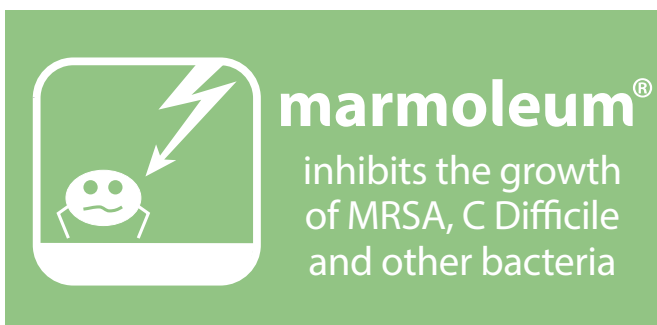
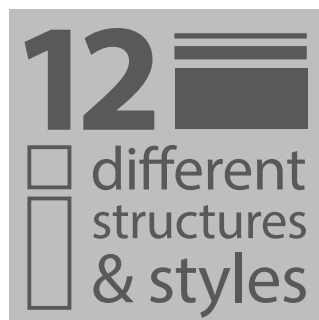
Topshield2 is also naturally bacteriostatic, resistant to chemicals and hand disinfectants making it an ideal solution for all heavy traffic environments such as schools, healthcare, offices and public buildings.



Welding

In the majority of installations, Marmoleum does not need to be welded as it is completely dimensionally stable and will not shrink. However, if welding is the preferred option, there are matching welding cords for every Marmoleum design.

marmoleum®



WHY CHOOSE MARMOLEUM?

marmoleum®
for Health & Education

A+



average of
43%



recycled content in marmoleum®





sheet, tile & plank



formats available

marmoleum®



is biodegradable in a controlled environment



Furniture linoleum doesn't show finger marks



topshield™ 2

reduces scuffing and results in less cleaning

2 4

C O L O U R S

guaranteed until 2021



the marmoleum®

production plants are certified to

ISO 14001
SA8000
and **OHSAS 18001**



marmoleum® marbled

real | fresco | vivace



Presented in a vast array of colours, the Marbled collection brings together strong and subtle patterns that deliver all the beauty of natural marble and the understated hues of fresco murals.

Marmoleum Real – With its classic marbled structure, Real is an all-round reliable solution for all floor covering needs.

Marmoleum Fresco – A subtle marbled structure that is based on the fresco artwork of ancient times.

Marmoleum Vivace – A rich, vividly marbled structure delivered by mixing eight elegant colours yet retaining a predominant hue.



3257 | edelweiss LRV 58



3136 | concrete LRV 47



3032 | mist grey LRV 42



3860 | silver shadow LRV 48



2621 | dove grey LRV 36



3420 | surprising storm LRV 31



3883 | moonstone LRV 45



3216 | moraine LRV 34



3146 | serene grey LRV 27



3866 | eternity LRV 21



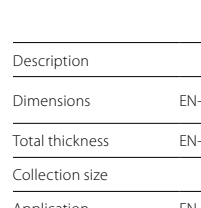
2629 | eiger LRV 19



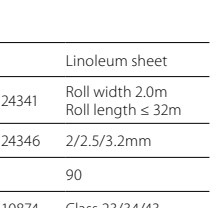
3405 | Granada LRV 28



3137 | slate grey LRV 16



3048 | graphite LRV 14



3872 | volcanic ash LRV 10



3421 | oyster mountain LRV 17



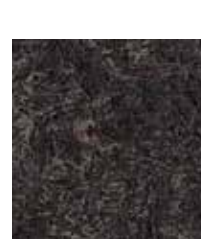
3139 | lava LRV 9



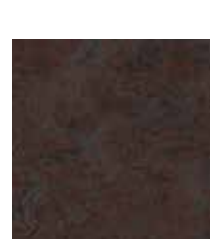
2939 | black LRV 5



3236 | dark bistre LRV 7



3248 | mammoth LRV 7



3248 | mammoth LRV 7

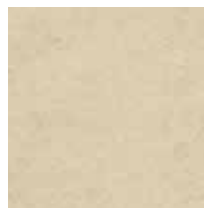
Description	Linoleum sheet	
Dimensions	EN-ISO 24341	Roll width 2.0m Roll length ≤ 32m
Total thickness	EN-ISO 24346	2/2.5/3.2mm
Collection size	90	
Application	EN-ISO 10874	Class 23/34/43
CE	EN 14041	
Reaction to fire	EN 13501-1	C _{fl} -s1
Slip resistance	EN 13893	DS: ≥0.30

Our recommended adhesive is 414 Euroflex Lino Plus or 614 Eurostar Lino Plus. Full technical specifications are available at www.forbo-flooring.co.uk/downloads



marmoleum® marbled

real | fresco | vivace



3858 | Barbados LRV 65



2713 | calico LRV 53



3886 | mother of pearl LRV 55



3141 | Himalaya LRV 40



3861 | Arabian pearl LRV 50



3038 | Caribbean LRV 55



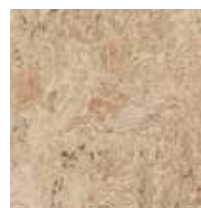
3120 | rosato LRV 51



2707 | barley LRV 49



3075 | shell LRV 44



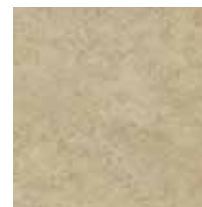
3077 | tan pink LRV 47



3407 | donkey island LRV 36



2499 | sand LRV 56



3249 | marly grounds LRV 40



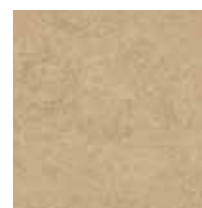
3234 | forest ground LRV 33



3871 | silver birch LRV 41



3252 | sparrow LRV 29



3250 | loam groove LRV 38



3232 | horse roan LRV 40



3246 | shrike LRV 21



3254 | clay LRV 17



3233 | shitake LRV 23



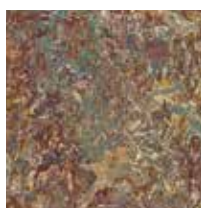
3876 | camel LRV 29



3425 | autumn leaf LRV 15



3874 | walnut LRV 11



3423 | painters palette LRV 24

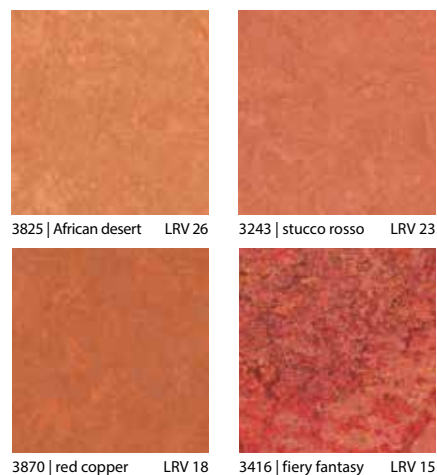
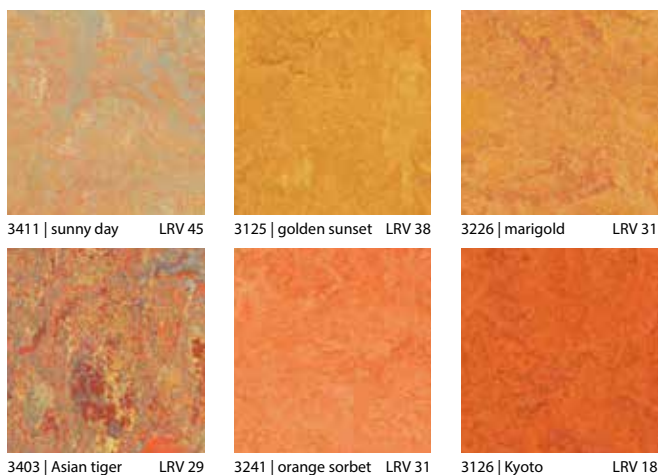
BREEAM generic ratings

Marmoleum – Linoleum (plain and decorative EN548)

Commercial	Education	Health	Domestic	Retail (Durability)	Retail (Fashion)	Meets Ska criteria
A	A+	A+	A	A+	A+	✓



Please note: Digital representations may vary from the actual product.
Please order a sample to see the full effect. Contact 0800 731 2369.



Description	Linoleum sheet	
Dimensions	EN-ISO 24341	Roll width 2.0m Roll length ≤ 32m
Total thickness	EN-ISO 24346	2/2.5/3.2mm
Collection size	90	
Application	EN-ISO 10874	Class 23/34/43
CE	EN 14041	
Reaction to fire	EN 13501-1	C _s -s1
Slip resistance	EN 13893	DS: ≥0.30

Our recommended adhesive is 414 Euroflex Lino Plus or 614 Eurostar Lino Plus. Full technical specifications are available at www.forbo-flooring.co.uk/downloads





marmoleum® marbled

real | fresco | vivace



3053 | dove blue LRV 27



3828 | blue heaven LRV 34



3219 | spa LRV 32



3055 | fresco blue LRV 23



3123 | arabesque LRV 23



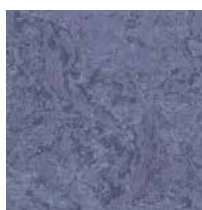
3238 | laguna LRV 30



3424 | Chagall's circus LRV 16



3422 | lavender field LRV 14



3221 | hyacinth LRV 17



3205 | lapis lazuli LRV 12



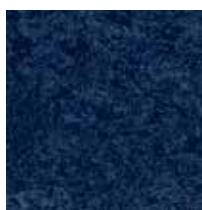
3245 | summer pudding LRV 12



3244 | purple LRV 8



3030 | blue LRV 12



3218 | deep ocean LRV 6



3242 | adriatica LRV 9



3884 | frost LRV 45



3881 | green wellness LRV 51



3882 | relaxing lagoon LRV 39



3885 | spring buds LRV 46



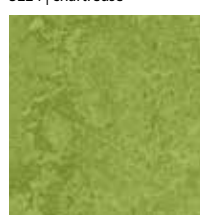
3224 | chartreuse LRV 38



3413 | green melody LRV 34



3239 | olive green LRV 19



3247 | green LRV 23



3240 | willow LRV 28



3255 | pine forest LRV 17



Marmoleum Marbled **3247** | green
+ **3421** | oyster mountain

marmoleum® solid

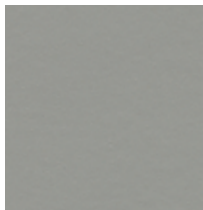


Marmoleum Solid is a contemporary collection that fits perfectly with the desire for more solid visuals and raw tactility. With its variety of plain to semi-plain aesthetics, it provides a large choice of honest designs that give the collection a strong, modern, identity. Solid has been designed to combine beautifully with other natural materials such as wood, glass and metal.



Marmoleum Walton 3352 | Berlin red

marmoleum® walton



171 | cement LRV 30



3369 | titanium LRV 48



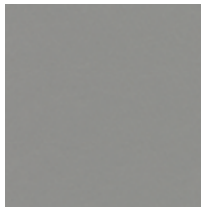
3363 | lilac LRV 38



3370 | terracotta LRV 18



186 | lead LRV 21



3367 | alloy LRV 25



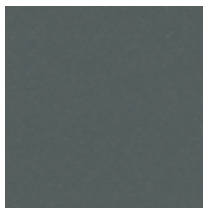
3360 | vintage blue LRV 29



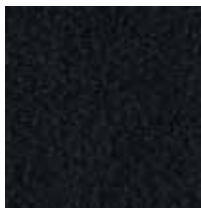
3355 | rosemary green LRV 21



3352 | Berlin red LRV 10



173 | paving LRV 13



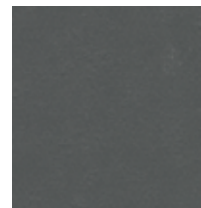
123 | black LRV 4



3358 | petrol LRV 9



3359 | bottle green LRV 7



3368 | grey iron LRV 12



3353 | eggplant purple LRV 8

marmoleum® cocoa

Marmoleum Cocoa, innovation that comes naturally

Marmoleum Cocoa embraces our ethos of sustainable design and is a truly new addition to the collection. By using a waste product from another industry we are collaborating to reduce waste, improve recycling and contribute to a better environment. By adding cocoa shells to the traditional Marmoleum ingredients we have created an innovation in construction and aesthetics. The result is a new and exciting surface texture that is both natural looking and contemporary in feel. The inclusion of cocoa adds a rich look that is fresh, modern and yet uniquely Marmoleum.



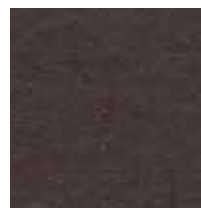
reddot award 2017
winner



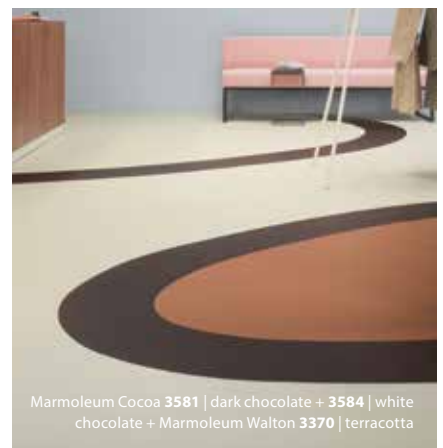
3584 | white chocolate LRV 60



3580 | milk chocolate LRV 20



3581 | dark chocolate LRV 6



Marmoleum Cocoa 3581 | dark chocolate + 3584 | white chocolate + Marmoleum Walton 3370 | terracotta



3582 | earl grey chocolate LRV 33



3583 | chocolate blues LRV 9



Marmoleum Piano 3607 | grey dusk + 3625 | salsa red
+ 3629 | frosty grey + 3630 | angora + 3631 | otter + 3634 | meadow
+ 3644 | Nordic blue + 3646 | young grass + 3647 | nettle green



3629 | frosty grey LRV 49



3650 | polar bear LRV 59



3601 | warm grey LRV 32



3630 | angora LRV 37



3648 | sunray LRV 59



3634 | meadow LRV 43



3607 | grey dusk LRV 11



3631 | otter LRV 20



3622 | mellow yellow LRV 39



3646 | young grass LRV 38



3642 | periwinkle LRV 24



3613 | almost darkness LRV 5



3632 | sealion LRV 10



3651 | zinnia LRV 24



3647 | nettle green LRV 24



3649 | greenwood LRV 11



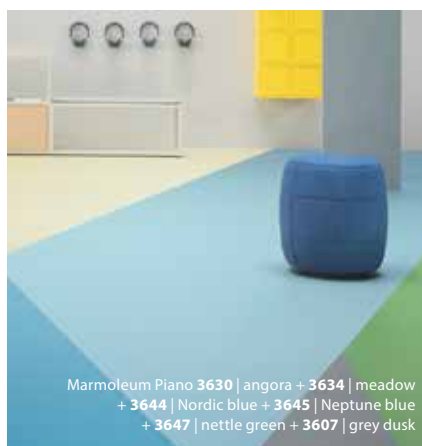
3644 | Nordic blue LRV 30

Description	Linoleum sheet	
Dimensions	EN-ISO 24341	Roll width 2.0m Roll length ≤ 33 lm
Total thickness	EN-ISO 24346	2.5mm
Collection size	78	
Application	EN-ISO 10874	Class 23/34/43
CE	EN 14041	
Reaction to fire	EN 13501-1	C _{fl} -s1
Slip resistance	EN 13893	DS: ≥0.30

Our recommended adhesive is 414 Euroflex Lino Plus or 614 Eurostar Lino Plus. Full technical specifications are available at www.forbo-flooring.co.uk/downloads



3625 | salsa red LRV 11



Marmoleum Piano 3630 | angora + 3634 | meadow
+ 3644 | Nordic blue + 3645 | Neptune blue
+ 3647 | nettle green + 3607 | grey dusk



3645 | Neptune blue LRV 15



3652 | Atlantic blue LRV 9



Marmoleum Concrete 3704 | satellite + 3724 | orbit



BREEAM generic ratings
Marmoleum – Linoleum (plain and decorative EN548)

Commercial	Education	Health	Domestic	Retail (Durability)	Retail (Fashion)	Meets Ska criteria
A	A+	A+	A	A+	A+	✓



3733 | yellow shimmer LRV 42



3712 | orange shimmer LRV 31



3737 | red shimmer LRV 15



3735 | purple shimmer LRV 18



3734 | blue shimmer LRV 20



3736 | green shimmer LRV 15



3738 | orange glow LRV 27



3743 | red glow LRV 14



3740 | purple glow LRV 21



3739 | blue glow LRV 16



3742 | green glow LRV 39



3741 | yellow glow LRV 58



Marmoleum Concrete 3733 | yellow shimmer + 3741 | yellow glow

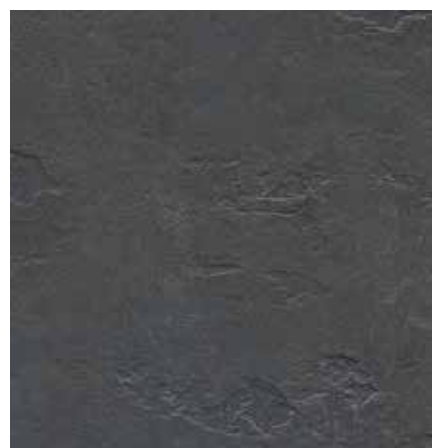
Description	Linoleum sheet	
Dimensions	EN-ISO 24341	Roll width 2.0m Roll length ≤ 33 lm
Total thickness	EN-ISO 24346	2.5mm
Collection size	78	
Application	EN-ISO 10874	Class 23/34/43
CE	EN 14041	
Reaction to fire	EN 13501-1	C _s -s1
Slip resistance	EN 13893	DS: ≥0.30

Our recommended adhesive is 414 Euroflex Lino Plus or 614 Eurostar Lino Plus. Full technical specifications are available at www.forbo-flooring.co.uk/downloads
Please note: Digital representations may vary from the actual product. Please order a sample to see the full effect. Contact 0800 731 2369.



marmoleum® slate

Inspired by the natural texture of stone, Marmoleum Slate introduces a unique embossed texture that adds a new dimension to our Marmoleum flooring. The result is a surface that has the timeless aesthetic of stone with the warmth and purity of linoleum.



e3725 | Welsh slate



reddot award 2017
winner



e3707 | Highland black LRV 7



Marmoleum Slate e3725 | Welsh slate



e3745 | Cornish grey LRV 15



e3747 | Lakeland shale LRV 21



e3746 | Newfoundland slate LRV 11

marmoleum® linear



Marmoleum Striato is known for its organic linear pattern and warm natural colours. Marmoleum Striato Textura adds a tactile dimension and introduces a wonderful opportunity to play with the subtle shadows of light. This truly brings the floor to life.



marmoleum® striato | textura



e5216 | Pacific beaches LRV 48



e5235 | North Sea coast LRV 32



e5236 | fox cub LRV 19



e5217 | withered prairie LRV 23



e5232 | rocky ice LRV 44



e3573 | trace of nature LRV 27




e5231 | Cliffs of Moher LRV 17

Description	Linoleum sheet	
Dimensions	EN-ISO 24341	Roll width 2.0m Roll length ≤ 33m
Total thickness	EN-ISO 24346	2.5mm
Collection size	27	
Application	EN-ISO 10874	Class 23/34/43
CE	EN 14041	
Reaction to fire	EN 13501-1	C _{fl} -s1
Slip resistance	EN 13893	DS: ≥0.30

BREEAM generic ratings

Marmoleum – Linoleum (plain and decorative EN548)

Commercial	Education	Health	Domestic	Retail (Durability)	Retail (Fashion)	Meets Ska criteria	
A	A+	A+	A	A+	A+	✓	

Our recommended adhesive is 414 Euroflex Lino Plus or 614 Eurostar Lino Plus. Full technical specifications are available at www.forbo-flooring.co.uk/downloads
Please note: Digital representations may vary from the actual product. Please order a sample to see the full effect. Contact 0800 731 2369.



Marmoleum Striato Original offers a palette that is neutral with warm tones and greyish colours from light to dark, delivering natural looking floors that are great on their own, and in combination with other floor coverings.

The subtle linear pattern will easily pick up colours from its environment and merges with other materials.



Marmoleum Striato Textura e5235 | North Sea coast

marmoleum® striato | original



DESIGN
AWARD
2016

marmoleum® linear



Marmoleum Striato Colour offers the possibility to use outspoken designs for colourful solutions, for instance in educational environments. The four colourways are designed to work very well together or individually.

In addition there are four uni items which are neutrals with a dash of colour that can be picked out in the higher contrast items.

marmoleum® striato | colour



5221 | colour stream

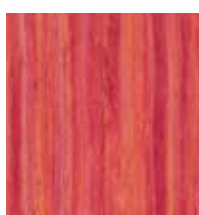
LRV 26



Marmoleum Striato Colour 5221 | colour stream + 5242 | red roses + Marmoleum Striato Original 3575 | white cliffs + 5232 | rocky ice



5241 | sunshine yellow LRV 39



5242 | red roses LRV 21



5243 | peacock blue LRV 23



5244 | hint of yellow LRV 70



5246 | orange highlights LRV 33



5245 | blue stroke LRV 69

Description	Linoleum sheet	
Dimensions	EN-ISO 24341	Roll width 2.0m Roll length ≤ 33m
Total thickness	EN-ISO 24346	2.5mm
Collection size	27	
Application	EN-ISO 10874	Class 23/34/43
CE	EN 14041	
Reaction to fire	EN 13501-1	C _{fl} -s1
Slip resistance	EN 13893	DS: ≥0.30

Our recommended adhesive is 414 Euroflex Lino Plus or 614 Eurostar Lino Plus. Full technical specifications are available at www.forbo-flooring.co.uk/downloads



5247 | dark aura

LRV 11



Marmoleum Striato Colour 5245 | blue stroke + 5221 | colour stream



PROJECT:
**Sunderland
Royal Hospital**

LOCATION:
Sunderland

DESIGNER: **P+HS Architects**

FLOORING MATERIAL:
Marmoleum Marbled **3131** | scarlet + **3847** | golden
saffron + **3245** | summer pudding + **3885** | spring
buds + **3858** | Barbados + **3238** | laguna +
Marmoleum Decibel **303035** | blue

*See page 8 for the full Marmoleum Marbled range
and page 22 for the Decibel range.*



PROJECT:
**Catapult Energy
Systems**

LOCATION:
Birmingham

DESIGNER: **Monteith Scott**

FLOORING MATERIAL:
Marmoleum Modular Linear **t5218** | Welsh Moor +
t5225 | compressed time + **t3573** | trace of nature

See page 16 for the full Marmoleum Modular Lines range.



PROJECT:
**Glasgow
Caledonian
University**

LOCATION:
Glasgow

DESIGNER: **Toby Paterson**

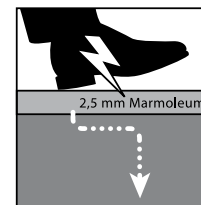
FLOORING MATERIAL: Marmoleum Marbled **3238** |
laguna + **3219** | spa + **3882** | relaxing lagoon +
Marmoleum Modular Linear **t5232** | rocky ice +
t3573 | trace of nature + **t5226** | grey granite

*See page 8 for the full Marmoleum Marbled range
and page 16 for the Marmoleum Modular Lines range.*



Ohmex Static Dissipative Linoleum meets the higher requirements for electrical conductivity.

Electrical resistance is improved to $< 1 \cdot 10^8$ (EN1081), ensuring personal safety and protecting equipment that is sensitive to static electricity. Marmoleum Ohmex, which is 2.5 mm thick, is available in four colours. Typical areas of use are computer/server rooms and areas with sensitive electrical equipment.



Marmoleum Ohmex 73055 | fresco blue



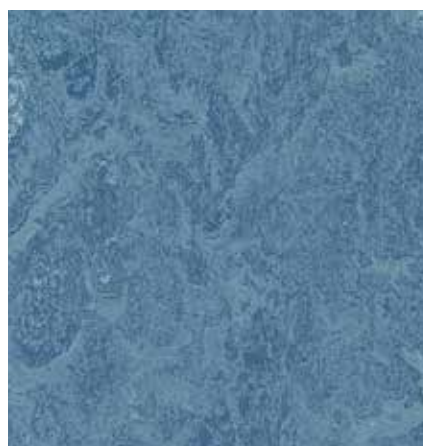
73032 | mist grey LRV 42



73038 | Caribbean LRV 55



73048 | graphite LRV 14



73055 | fresco blue LRV 23

Description	Linoleum sheet	
Dimensions	EN-ISO 24341	Roll width 2.0m Roll length ≤ 32 m
Total thickness	ISO 1765	2.5mm
Collection size	4	
Application	EN 1307	Class 23/34/42
Electrical resistance	EN 1081	$1 \cdot 10^2 < R_1 < 1 \cdot 10^8 \Omega$ static dissipative
CE	EN 14041	
Reaction to fire	EN 13501-1	C _{fl} -s1
Slip resistance	EN 13893	DS: ≥ 0.30

Our recommended adhesive is 615 Eurostar Lino EL.
Full technical specifications are available at
www.forbo-flooring.co.uk/downloads



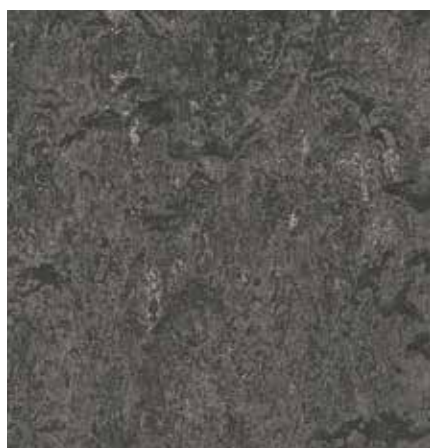
marmoleum® acoustic

Marmoleum Acoustic has a total thickness of 4mm and reduces impact sound by 14 dB (ISO 717-2).

It is a twinlayer linoleum built up from 2mm of Marmoleum and 2mm Corkment backing. Using Marmoleum Acoustic reduces installation costs as it can be installed in one go, avoiding the need to first lay Corkment and then Marmoleum. Marmoleum Acoustic is available in six colours.



Marmoleum Acoustic 33048 | graphite



33048 | graphite

LRV 14



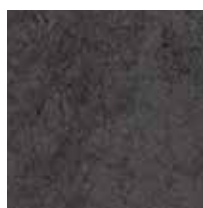
33032 | mist grey

LRV 42



33075 | shell

LRV 44



33139 | lava

LRV 9



33055 | fresco blue

LRV 23

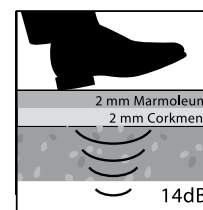


33038 | Caribbean

LRV 55



1200 | corkment



Description		Linoleum sheet
Dimensions	EN-ISO 24341	Roll width 2.0m Roll length ≤ 32m
Total thickness	ISO 1765	4.0mm
Collection size		6
Application	EN 1307	Class 23/33/41
Acoustical impact noise reduction		≤ 14 dB
CE	EN 14041	
Reaction to fire	EN 13501-1	C _s -s1
Slip resistance	EN 13893	DS: ≥ 0.30

Our recommended adhesive is 540 Eurosafe Special or 640 Eurostar Special. Full technical specifications are available at www.forbo-flooring.co.uk/downloads



Marmoleum Decibel is 3.5mm thick and provides an impact sound reduction of 17dB. The acoustic performance is achieved by laminating 2.5mm Marmoleum onto a 1mm thick layer of polyolefin foam.

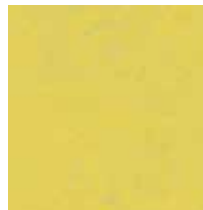
Marmoleum Decibel is also available in all Marmoleum colours as a made-to-order item with an 17 dB impact sound rating. Please note that minimum order quantities and lead times will apply. Please contact Forbo Customer Service for more details.



262135 | dove grey LRV 36



371135 | cloudy sand LRV 49



374135 | yellow glow LRV 58



374235 | green glow LRV 39



305335 | dove blue LRV 23



312035 | rosato LRV 51



312535 | golden sunset LRV 38



322435 | chartreuse LRV 38



372435 | orbit LRV 37



270735 | barley LRV 49



373835 | orange glow LRV 27



324735 | green LRV 23



323835 | laguna LRV 30



373935 | blue glow LRV 16



370635 | beton LRV 28



307535 | shell LRV 44



312635 | Kyoto LRV 18



374335 | red glow LRV 14



322135 | hyacinth LRV 17



303035 | blue LRV 12



304835 | graphite LRV 14



370835 | fossil LRV 34



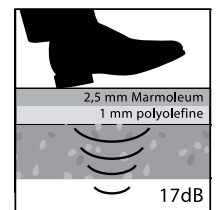
324635 | shriek LRV 21



312735 | Bleeckerstreet LRV 9



324535 | summer pudding LRV 12



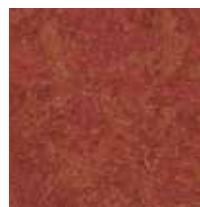
387235 | volcanic ash LRV 10



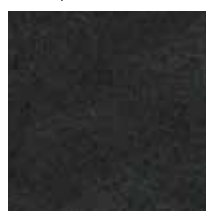
372335 | nebula LRV 17



370935 | silt LRV 22



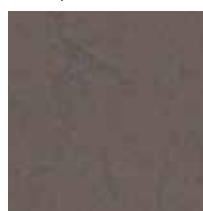
320335 | henna LRV 11



370735 | black hole LRV 7



324835 | mammoth LRV 7



356835 | delta lace LRV 13



387435 | walnut LRV 48

Description	Linoleum sheet	
Dimensions	EN-ISO 24341	Roll width 2.0m Roll length ≤ 32m
Total thickness	ISO 1765	3.5mm
Collection size	33	
Application	EN 1307	Class 23/33/41
Acoustical impact noise reduction	≤ 17 dB	
CE	EN 14041	
Reaction to fire	EN 13501-1	C _{fl} -s1
Slip resistance	EN 13893	DS: ≥0.30

Our recommended adhesive is 540 Eurosafe Special or 640 Eurostar Special. Full technical specifications are available at www.forbo-flooring.co.uk/downloads

MARMOLEUM MARBLED SHEET

OPTIONS BY COLOUR

Design	Gauge		Other functionalities			Available until 01/01/2021
	2.0mm	3.2mm	Decibel 17dB	Acoustic 14dB	Ohmex static control	
Real – 2621 dove grey	●		●			
Real – 2707 barley			●			
Real – 2713 calico	●					●
Real – 2939 black	●					●
Real – 3030 blue	●		●			●
Real – 3032 mist grey	●	●		●	●	●
Real – 3038 Caribbean	●	●		●	●	●
Real – 3048 graphite	●	●	●	●	●	●
Real – 3053 dove blue	●		●			
Real – 3055 fresco blue	●	●		●	●	●
Real – 3075 shell	●	●	●	●		●
Real – 3077 tan pink	●					
Real – 3120 rosato			●			
Real – 3123 arabesque	●					●
Real – 3125 golden sunset	●		●			
Real – 3126 Kyoto	●		●			
Real – 3127 Bleeckerstreet	●		●			●
Real – 3136 concrete	●					●
Real – 3139 lava	●			●		●
Real – 3146 serene grey	●	●				●
Real – 3173 Van Gogh	●					●
Real – 3174 Sahara	●					●
Real – 3203 henna	●		●			●
Real – 3221 hyacinth	●		●			
Real – 3224 chartreuse	●		●			
Real – 3233 shitake	●					●
Real – 3234 forest ground	●					●
Real – 3236 dark bistre	●					
Real – 3238 laguna	●		●			
Real – 3240 willow	●					
Real – 3242 adriatica	●					
Real – 3244 purple	●					
Real – 3249 marly grounds	●					
Real – 3250 loam groove	●					
Real – 3252 sparrow	●					
Real – 3254 clay	●					
Fresco – 3825 African desert	●	●				●
Fresco – 3828 blue heaven	●					●
Fresco – 3846 natural corn	●					●
Fresco – 3847 golden saffron	●					●
Fresco – 3858 Barbados	●					●
Fresco – 3860 silver shadow	●					●
Fresco – 3861 Arabian pearl	●					
Fresco – 3866 eternity	●	●				
Fresco – 3871 silver birch	●					
Fresco – 3872 volcanic ash	●		●			
Fresco – 3874 walnut	●		●			
Fresco – 3881 green wellness	●					
Fresco – 3882 relaxing lagoon	●					

All of the Marbled colours are available in a 2.5mm gauge. However, a number of colourways are also available in different gauges and functionalities. The table above shows which colours are available in each option.

marmoleum® modular

MARMOLEUM IN **TILE AND PLANK** FORMAT

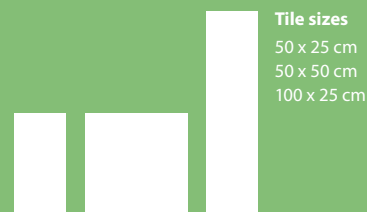
Marmoleum Modular is a collection with a twist, offering over 50 colours and 3 different tile and plank sizes, that enable individual and sustainable flooring designs to be created. Similarly to Marmoleum Sheet, the Marmoleum Modular collection is split into six design styles – Lines, Textura, Shade, Slate, Colour and Marbled.

www.forbo-flooring.co.uk/marmoleummodular

88%
natural
raw materials

76%
rapidly
renewable

58%
recycled
content



Tile sizes
50 x 25 cm
50 x 50 cm
100 x 25 cm



Marmoleum Modular Textura **te5218** | Welsh moor

With our Committed to the Health of One programme, we strive to create better indoor environments and Marmoleum is a prime example of this commitment. Naturally bacteriostatic, Marmoleum does not harbour allergens and holds the Allergy UK Seal of Approval™. It has low VOCs contributing to positive indoor air quality and has high LRVs which help create positive environments in which to work, live and play. Marmoleum is also protected by a unique water based finish 'Topshield2' which ensures no hiding place for dirt or bacteria.



**COMMITTED
TO THE HEALTH
OF ONE**

WWW.FORBO-FLOORING.CO.UK/CHO

MARMOLEUM MODULAR COLLECTION AT A GLANCE

marmoleum® modular | lines

Bringing the linearity trend into the colour spectrum of the 21st Century, the new Marmoleum Modular Lines range features a palette of 11 striated colours – from cool whites and greys to warm and softer wood tones.



26

marmoleum® modular | textura

Reflecting both the warm and cool tones of natural wood, our wood grain and saw cut embossing effects bring another dimension to Marmoleum Modular.



27

marmoleum® modular | shade

The shade colourways are designed to complement each other and the palette is presented in delicate steps of colour intensity and hue to create natural realistic stone and concrete patterns.



28

marmoleum® modular | slate

Featuring a cool concrete palette with our unique slate embossing delivering a contemporary yet natural finish to floor design.



28

marmoleum® modular | colour

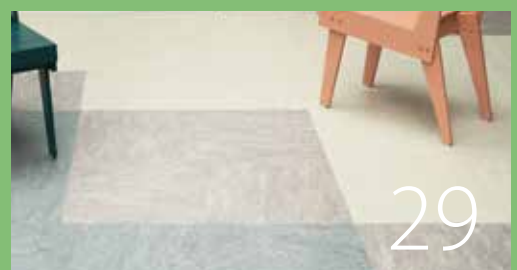
The Colour range features fashionable pastels alongside a modern mix of colourful concrete varieties and a full spectrum of bright warm colours which liven up the palette.



29

marmoleum® modular | marbled

Classic and contemporary marbled colours have been created to mix and match giving an extra dimension to your floor plan.



29

marmoleum® modular | lines



Lines: Bringing the linearity trend into the colour spectrum of the 21st Century, the new Marmoleum Modular Lines range features a palette of 11 striated colours – from cool whites and greys to warm and softer wood tones.

Available as 100 x 25cm planks, Marmoleum Modular Lines can be used on its own to striking effect or can be combined with elements from the Marmoleum Modular Textura, Colour, Shade, Slate or Marbled ranges to create truly unique flooring designs.

Plank size
100 x 25 cm



t3575 | white cliffs LRV 57



t5232 | rocky ice LRV 44



Marmoleum Modular Lines **t3573** | trace of nature
+ **t5231** | Cliffs of Moher + **t5232** | rocky ice



t5226 | grey granite LRV 29



t3573 | trace of nature LRV 27



t5230 | white wash LRV 49



t5235 | North Sea coast LRV 32



t5225 | compressed time LRV 34



t5237 | black sheep LRV 18



t5231 | Cliffs of Moher LRV 17



t5218 | welsh moor LRV 8



t5217 | withered prairie LRV 23

Description	Linoleum tile	
Dimensions (length x width)	EN-ISO 24342	100 x 25cm
Packaging per carton		3m ² (12 tiles)
Total thickness	EN-ISO 24346	2.5mm
Collection size		11
Application	EN-ISO 10874	Class 23/34/43
CE	EN 14041	
Reaction to fire	EN 13501-1	C _s -s1
Slip resistance	EN 13893	DS: ≥0.30

Our recommended adhesive is 414 Euroflex Lino Plus or 646 Eurostar Premium. Full technical specifications are available at www.forbo-flooring.co.uk/downloads



A succinct collection of 7 tones, each featuring either a wood grain or saw cut embossed finish to complement the design, Marmoleum Modular Textura can be used on it's own or alongside its Lines counterparts to add depth and texture to flooring concepts.

Plank size
100 x 25 cm



Marmoleum Modular Textura **te3573** | trace of nature

Description	Linoleum tile	
Dimensions (length x width)	EN-ISO 24342	100 x 25cm
Packaging per carton	3m ² (12 tiles)	
Total thickness	EN-ISO 24346	2.5mm
Collection size	7	
Application	EN-ISO 10874	Class 23/34/43
CE	EN 14041	
Reaction to fire	EN 13501-1	C _{fl} -s1
Slip resistance	EN 13893	DS: ≥0.30

Please note: Digital representations may vary from the actual product. Please order a sample to see the full effect. Contact 0800 731 2369.

Our recommended adhesive is 414 Euroflex Lino Plus or 646 Eurostar Premium. Full technical specifications are available at www.forbo-flooring.co.uk/downloads



te3573 | trace of nature



LRV 27

te5231 | Cliffs of Moher LRV 17



te5230 | white wash LRV 49



te5235 | North Sea coast LRV 32



te5217 | whithered prairie LRV 23



te5229 | fresh walnut LRV 15



te5218 | Welsh moor

LRV 8



BREEAM generic ratings

Marmoleum – Linoleum (plain and decorative EN548)

Commercial	Education	Health	Domestic	Retail (Durability)	Retail (Fashion)	Meets Ska criteria
A	A+	A+	A	A+	A+	✓



Marmoleum Modular Textura **te5218** | Welsh moor

marmoleum® modular | shade

marmoleum® modular | slate



Shade offers a collection of concrete structures in cool and warm greys as well as classic black and white, all designed to complement each other, while the embossed finish on Slate brings a contemporary finish to the design.



t3722 | stardust LRV 59



t3716 | Mercury LRV 50



t3711 | cloudy sand LRV 49



t3707 | black hole LRV 7



t3717 | Neptune LRV 38



t3702 | liquid clay LRV 23



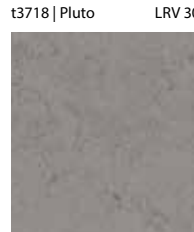
Marmoleum Modular Shade t3717 | Neptune



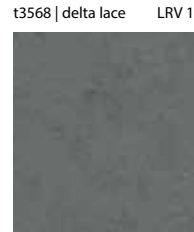
t3718 | Pluto LRV 30



t3568 | delta lace LRV 13



t3704 | satellite LRV 23



t3745 | Cornish grey LRV 15



te3745 | Cornish grey LRV 15



te3747 | Lakeland shale LRV 21



te3746 | Newfoundland slate LRV 11



te3725 | Welsh slate



Marmoleum Modular Slate te3745 | Cornish grey + te3725 | Welsh slate + te3747 | Lakeland shale

Tile sizes
50 x 25 cm
50 x 50 cm



Description	Linoleum tile	
Dimensions (length x width)	EN-ISO 24342	50 x 25cm / 50 x 50cm
Packaging per carton		5m ² (40 tiles) / 5m ² (20 tiles)
Total thickness	EN-ISO 24346	2.5mm
Collection size		10/4/8/11
Application	EN-ISO 10874	Class 23/34/43
CE	EN 14041	
Reaction to fire	EN 13501-1	C _s -s1
Slip resistance	EN 13893	DS: ≥0.30

Our recommended adhesive is 414 Euroflex Lino Plus or 646 Eurostar Premium. Full technical specifications are available at www.forbo-flooring.co.uk/downloads

marmoleum® modular | colour



Colour: a range featuring a modern mix of colourful concrete varieties and a full spectrum of bright warm colours which liven up the palette. This is the heart of the collection and embodies one of the best known features of Marmoleum, that of colour on the floor. Colours can be used as focus, accents or as a different way to express the environment.



Marmoleum Modular Colour t3358 | petrol + t3352 | Berlin red

Tile size
50 x 50 cm



t3251 | lemon zest LRV 52



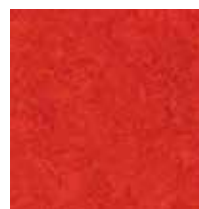
t3362 | yellow moss LRV 30



t3238 | laguna LRV 30



t3354 | pumpkin yellow LRV 31



t3131 | scarlet LRV 13



t3030 | blue LRV 12



t3352 | Berlin red



t3358 | petrol LRV 9

marmoleum® modular | marbled

Marble: classic and contemporary marbled colours have been created to mix and match giving an extra dimension to your floor plan. Bring Marmoleum Modular to life by combining marbles to reflect a stone like floor.



t3136 | concrete LRV 47



t2713 | calico LRV 53



t3120 | rosato LRV 51



t3407 | donkey island LRV 36



t3146 | serene grey LRV 27



t3232 | horse roan LRV 40



t2707 | barley LRV 49



t3053 | dove blue LRV 27



t3216 | moraine LRV 34



t3405 | Granada LRV 28



t3048 | graphite LRV 14



Marmoleum Modular Marble t3216 | moraine + t3136 | concrete + t3053 | dove blue

BREEAM generic ratings

Marmoleum – Linoleum (plain and decorative EN548)

Commercial	Education	Health	Domestic	Retail (Durability)	Retail (Fashion)	Meets Ska criteria
A	A+	A+	A	A+	A+	✓



Please note: Digital representations may vary from the actual product. Please order a sample to see the full effect. Contact 0800 731 2369.

FORBO'S LINOLEUM BRAND

In addition to our standard ranges, we also offer a number of linoleum floor coverings developed for 'off the floor' functions.

Forbo's Furniture Linoleum Desktop is a natural surfacing material that delivers the finishing touch for all high end 3D furniture designs such as desks, chairs, stools, cabinets, doors and displays. The material is flexible and can be applied as a surface on all kinds of constructions. Furniture Linoleum is renowned for its elegance and durability, radiating high quality and finesse.

Bulletin board is a linoleum surfacing material with excellent pin-hole recovery making it ideal for use as a notice board.



Bulletin Board 2162 | duck egg

With our products we aim to create better quality interior environments for people to live and work. In the case of Furniture Linoleum this is created through high quality furnishing that is natural, hygienic, low emitting and a pleasure to touch and use.

Bulletin Board is a pin-board and wall covering solution that is created from natural and renewable raw materials that make a bacteriostatic finishing material. It's phthalate free and does not attract dust helping to create a hygienic environment.



**COMMITTED
TO THE HEALTH
OF ONE**

WWW.FORBO-FLOORING.CO.UK/CHO

OFF THE FLOOR LINOLEUM COLLECTION AT A GLANCE

bulletin board®

Pinboard linoleum, or Bulletin Board, offers a practical, simple solution to collect and exchange thoughts and ideas wherever people plan, create and meet. Simply share your thoughts by pinning your idea onto the wall.



furniture linoleum | desktop

Furniture Linoleum is a decorative surfacing material that can be applied to vertical, horizontal and curved surfaces, providing interior furniture with a truly distinctive and individual look.





Pinboard linoleum, or Bulletin Board, offers a practical, simple solution to collect and exchange thoughts and ideas wherever people plan, create and meet. Simply share your thoughts by pinning your idea onto the wall.

Bulletin Board is an all natural material that can be applied in framed pin boards or directly onto the wall. Its surface is tactile and colourful, creating a decorative element in your space, in addition to being a practical aid in your day to day activity.



Bulletin Board **2162** | duck egg + **2166** | nutmeg spice
+ **2186** | blanched almond + **2210** | hot salsa



2206 | oyster shell LRV 43



2182 | potato skin* LRV 28



2187 | brown rice LRV 34



2186 | blanched almond* LRV 34



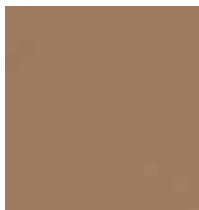
2211 | tangerine zest LRV 20



2162 | duck egg LRV 25



2208 | mushroom medley LRV 18



2166 | nutmeg spice* LRV 22



2210 | hot salsa LRV 11



2204 | poppy seed LRV 16



2207 | cinnamon bark LRV 18



2209 | black olive LRV 5



2214 | blue berry LRV 6



2212 | fresh pineapple LRV 40

2209 | black olive LRV 5

Description		Bulletin Board
Dimensions	EN-ISO 24341	Roll width 1.22m *(3 items available in 1.83m) Roll length ≤ 28m
Total thickness	ISO 1765	6.0mm
Collection size	15	
Force on pins – Perpendicular to pin direct LH000421		25 N (typical)
Force on pins – Perpendicular to pin at 7mm LH000421		10 N (typical)
Force on pins – Parallel to pin (pulling the pin out) LH000421		15 N (typical)

Our recommended adhesive is 414 Euroflex Lino plus and 530 Eurosafe Cork. Full technical specifications are available at www.forbo-flooring.co.uk/downloads



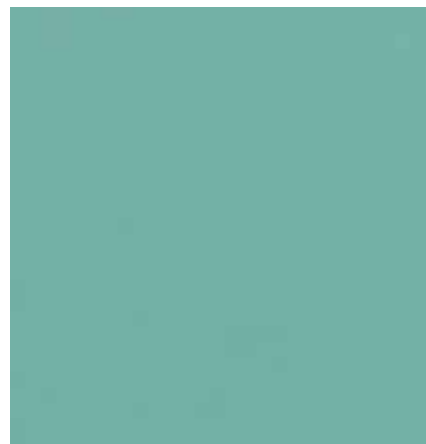
furniture linoleum | desktop

Elegant and natural

Forbo's Furniture Linoleum Desktop is a natural surfacing material that delivers the finishing touch for all high end 3D furniture designs such as desks, chairs, stools, cabinets, doors and displays. The material is flexible and can be applied as a surface on all kinds of constructions. Furniture Linoleum is renowned for its elegance and durability, radiating high quality and finesse.

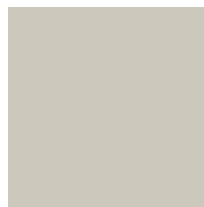
Warm and tactile

Furniture Linoleum delivers a combination of a satin matt surface with a warm, fine texture creating interior furniture with a truly distinctive, genuinely individual look and feel that really is unlike any other surface material available. The natural character of Furniture Linoleum Desktop means that the material achieves a beautiful patina over time.



4180 | aquavert

LRV 35

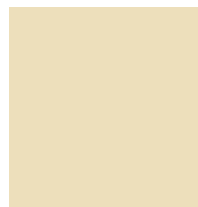


4176 | mushroom LRV 54



4175 | pebble LRV 35

4177 | vapour LRV 50



4157 | pearl LRV 67



4182 | spring green LRV 47

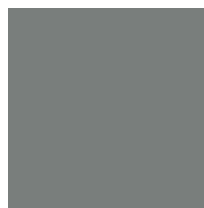


4181 | midnight blue LRV 9

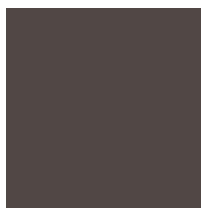


4185 | powder LRV 54

Description	Linoleum sheet	
Dimensions	EN-ISO 24341	Roll width 1.83m (2.0m – Nero only) Roll length ≤ 30m
Total thickness	ISO 1765	2.0mm
Collection size	21	



4132 | ash LRV 23



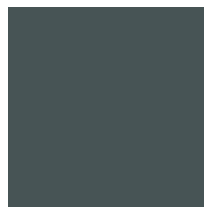
4172 | mauve LRV 11



4184 | olive LRV 18



4183 | pistachio LRV 47



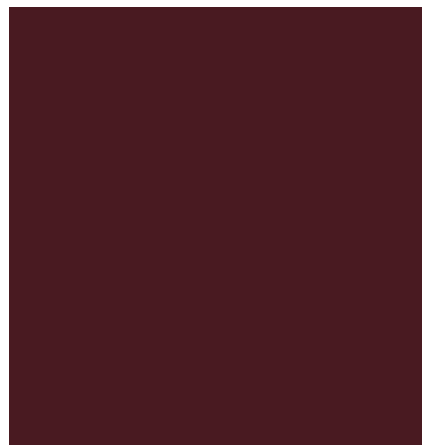
4155 | pewter LRV 12



4178 | iron LRV 8



4174 | conifer LRV 7



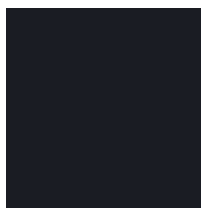
4154 | burgundy LRV 7



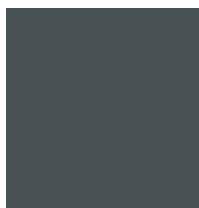
4186 | orange blast LRV 22



4023 | nero LRV 5



4166 | charcoal LRV 6



4179 | smokey blue LRV 8



4164 | salsa LRV 9

Our recommended adhesive is 233 Eurosol Contact. Full technical specifications are available at www.forbo-flooring.co.uk/downloads

Please note: Digital representations may vary from the actual product. Please order a sample to see the full effect. Contact 0800 731 2369.



Forbo Flooring Systems is part of the Forbo Group, a global leader in flooring and movement systems, and offers a full range of flooring products for commercial and affordable housing and new build markets. High quality linoleum, vinyl, textile, flocked and entrance flooring products combine functionality, colour and design, offering total flooring solutions for any environment.

UK

Forbo Flooring UK Limited
High Holborn Road
Ripley
Derbyshire DE5 3NT

London EC1 showroom

79 St John Street, Clerkenwell
London EC1M 4NR
Tel: 0207 553 9300

For commercial enquiries:

If calling from the North,
Midlands, London & South East
Tel: 0800 0282 162
Fax: 01772 646 912

If calling from Scotland & South West
Tel: 0800 0935 258
Fax: 01592 643 999

Nuway enquiries:

Tel: 01773 740 688
Fax: 01773 740 640

Residential enquiries:

Tel: 0800 0935 846
Fax: 01592 643 999

Email: info.flooring.uk@forbo.com
www.forbo-flooring.co.uk

Samples:

Tel: 0800 731 2369
email: samples.uk@forbo.com

Ireland

Forbo Ireland Ltd
2 Deansgrange Business Park
Blackrock
Co Dublin

Tel: 00353 1 2898 898

Fax: 00353 1 2898 177

Email: info.ireland@forbo.com
www.forbo-flooring.ie

Find us on



Registered office:

Forbo Flooring UK Limited
High Holborn Road
Ripley
Derbyshire DE5 3NT
Registered in England 9200318

